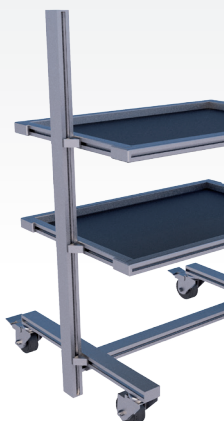
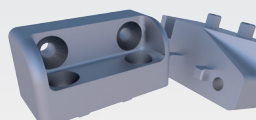
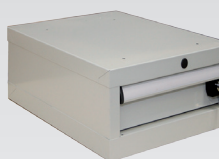


### WORKPLACE SYSTEMS

### PAGE

Air stream rails	4.22
Assembly projects	4.40 - 4.47
Base cabinet	4.32
Bottle holder	4.25
Carabiner hook	4.26
Circline magnifier luminaires with electronic ballast	4.10
Classic industrial swivel chairs and accessories	4.34 - 4.35
Connection cable / plug	4.21
Connection kit for modular power strip	4.20
Connection sleeve for desktops	4.39
Connector and receptacle for cable assembly	4.20
Corner bracket	4.31
Corner piece	4.30
Desktops	4.38
Display board	4.25
Drawer cabinets and accessories	4.32
Fastening plate for air stream rail	4.23
Footrests	4.23
Industrial swivel chairs KLIMASTAR and accessories	4.36 - 4.37
Information panels	4.24
LED circline magnifier luminaires	4.11 - 4.13
LED flexible-tube luminaires	4.16 - 4.17
LED friction arm luminaires	4.14 - 4.15
LED strips	4.18
LED system luminaires	4.2 - 4.5
LED tube luminaires	4.19
Lifting columns	4.28 - 4.29
Material level Basic	4.31
Material level Economic	4.30
Material trolley Basic	4.31
Material trolley Economic	4.30
Plug-in nipple	4.22
Power strips	4.20
Profile 22,5 x 30	4.30
Profile 22,5 x 45	4.31
Quick action coupling	4.22
Reduction nipple	4.22
Screwdriver suspension	4.26
Sealing plug with external thread	4.23
Spring balancers	4.26
Strap for attaching system luminaires	4.9
System luminaires with electronic ballast	4.6 - 4.9
T-distributor for plug system T-13	4.21
TFT monitor bracket	4.24
Tool slider for slot 8 und slot 10	4.26



## FROM PLANNING TO IMPLEMENTATION: EASY SYSTEMS BENELUX - EVERYTHING FROM ONE PLACE

### Automation components for engineering and industrial companies

We deal with the implementation of simple and cost effective production facilities with the help of our aluminium profile modular system. From 3D construction to straightforward implementation.

For more then ten years we have devoted ourselves to generating the best solutions for the most varied system configurations, in order to be equipped for all eventualities.

Our many years of experience enable us to provide the exact solution to meet your requirement.

Traditionally grown as well as innovative ideas are taken into consideration and this approach has acquired us high customer satisfaction.

The most varied systems – in particular our modular system - enable a cost friendly and visually appealing implementation of your projects. We supply technical manufacturing facilities for industrial companies and components

for machinery and plant engineering.

We would be glad to assist you with detailed advice about a suitable system, 3D construction and project planning, complete procurement of individual components and their assembly and corresponding supply of spare parts.

In doing so, we not only commit ourselves to the implementation of complex solutions but also to the supply of individual components.

Our multiple and extensive range combined with our straightforward approach will also convince you. Put us to the test!



We set the standards for innovation,  
product and occupational safety,  
product quality and performance.

## NOW EVEN MORE EFFICIENT WITH 7.8 MODULES 5000 K

### SYSTEM LUMINAIRES LED-AL1 ECO | S | 24V

<b>System luminaire</b> <b>LED-AL10 ECO</b> (without switch, 1 plug 4000K)	<b>Article no.:</b>	<b>603310</b>
--	---------------------	---------------

<b>System luminaire</b> <b>LED-AL10 S</b>	<b>Article no.:</b>	<b>603119</b>
--	---------------------	---------------

<b>System luminaire</b> <b>LED-AL10 24V</b>	<b>Article no.:</b>	<b>603140</b>
--	---------------------	---------------

<b>Length</b>	300 mm
<b>Power/current consumption</b>	7.8 Watts/0.09A
<b>Voltage/frequency</b>	220-240 Volt/50-60 Hz
<b>Voltage/direct current</b>	24 Volt/DC (with 603140)

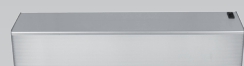
<b>Illuminant</b>	1x7.8W/5000K module
<b>Scope of supply</b>	Plug-in system without cable, (M12 A-coding 5-pole with 603140)

<b>Housing with mounting slot and switch (no switch with 24V)</b>	Anodised aluminium/ System of protection IP20
---	--

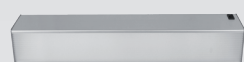
### Illuminance LED-AL 10 S | 24V

Distance	E average (Lux)	E max (Lux)
750 mm	635 lx	1004 lx
1000 mm	417 lx	548 lx
1250 mm	289 lx	345 lx
1500 mm	209 lx	237 lx

With desktop size 800 mm x 600 mm  
Colour rendering index CRI ~ 85  
(LED-AL10 ECO 4000K CRI >80)



603119



603120

### SYSTEM LUMINAIRES LED-AL20 S | D | 24V

<b>System luminaire LED-AL20 S</b>	<b>Article no.:</b>	<b>603120</b>
------------------------------------	---------------------	---------------

<b>System luminaire LED-AL20 D</b> (luminosity continuously dimmable)	<b>Article no.:</b>	<b>603130</b>
--	---------------------	---------------

<b>System luminaire</b> <b>LED-AL20 24V</b>	<b>Article no.:</b>	<b>603141</b>
--	---------------------	---------------

<b>Length</b>	585 mm
<b>Power/current consumption</b>	15.6 Watts/0,11A
<b>Voltage/frequency</b>	220-240 Volt/50-60 Hz
<b>Voltage/direct current</b>	24 Volt/DC (with 603141)

<b>Illuminant</b>	2 x 7.8W/5000K module
<b>Scope of supply</b>	Plug-in system without cable, (M12 A-coding 5-pole with 603141)

<b>Housing with mounting slot and switch (no switch with 24V)</b>	Anodised aluminium/ System of protection IP20
---	--

### Illuminance LED-AL 20D

Distance	E average (Lux)	E max (Lux)
750 mm	1231 lx	1998 lx
1000 mm	840 lx	1114 lx
1250 mm	598 lx	740 lx
1500 mm	442 lx	515 lx

With desktop size 1000mm x 600mm  
With LED-AL20 24V approx. 10% less  
Colour rendering index CRI ~ 85

## GOOD LIGHT AT WORKING PLACES MAKES SENSE!

- Productivity:** Good light increases productivity by up to 40%
- Safety:** Up to 2/3 of accidents can be avoided with appropriate lighting
- Health:** Significantly less absences with individually adjusted light
- Energy savings:** Huge saving potentials through LED lighting,  
up to 75% in comparison to T5 fluorescent tubes

### Illuminance LED-AL 30 D | DF | 24 V

Distance	E average (Lux)	E max (Lux)
750 mm	1732 lx	2559 lx
1000 mm	1194 lx	1562 lx
1250 mm	859 lx	1042 lx
1500 mm	641 lx	739 lx

With desktop size 1000mm x 600mm  
With LED-AL30 24V approx. 10% less  
Colour rendering index CRI ~ 85  
(LED-AL30 ECO 4000K CRI >80)

With the system light  
**LED-AL30DF** it is possible to individually  
adjust the colour temperature from 3000K  
to 6000K (in 500K steps), whilst the  
luminosity is steplessly variable.

You therefore have the right light  
for every task!

### SYSTEM LUMINAIRE LED-AL30 ECO | S | D | DF | 24 V

**System luminaire LED-AL30 ECO** Article no.: 603300  
(without switch, 1 plug 4000 K)

**System luminaire LED-AL30 S** Article no.: 603121

**System luminaire LED-AL30 D** Article no.: 603131  
(Illuminance continuously dimmable)

**System luminaire LED-AL30 DF** Article no.: 603160  
(dimmable, CRI adjustable)

**System luminaire LED-AL30 24V** Article no.: 603142

**Length** 870 mm

**Power/current consumption** 23.4 Watts/0.14A

**Voltage/frequency** 220-240 Volt/50-60 Hz

**Voltage/direct current** 24 Volt/DC  
(with 603142)

**Illuminant** 3 x 7.8W/5000K module

**Scope of supply** Plug-in system  
without cable,  
(M12 A-coding 5-pole  
with 603142)

**Housing with mounting slot  
and switch** Anodised aluminium/  
(no switch with 24V) System of protection IP20

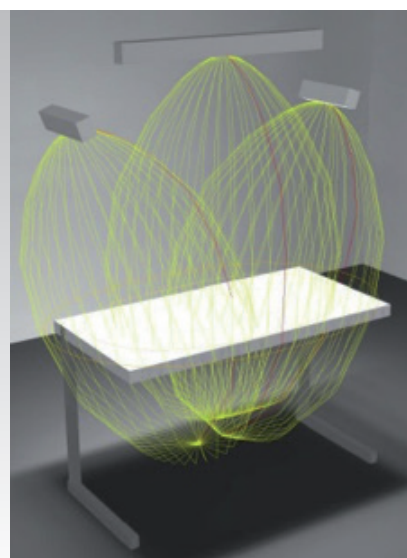
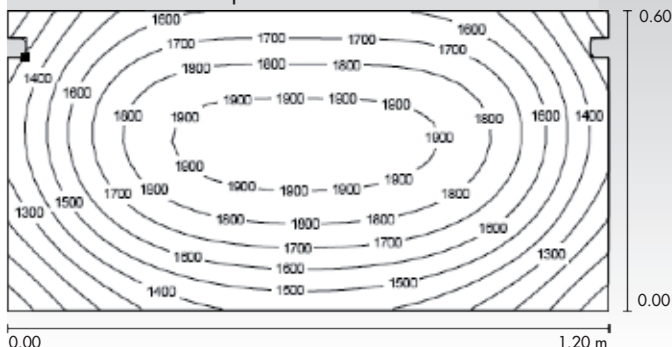


603121

### Illuminance combination (example) 2x LED-AL10 S | D - 1x LED-AL30 S | D

Distance	E average (Lux)	E max (Lux)
850 mm; 20° (AL10)	1622 lx	1963 lx
1100 mm (AL30)		

With desktop size 1200mm x 600mm



Example of a  
combination of  
different LED system  
lights for a  
highly effective  
light system

## ERGONOMIC QUALITY OF WORKPLACES

The ergonomic quality of workplaces in industry is partly dependent upon whether visual tasks can be overcome effortlessly. Here, companies are also facing a challenge due to demographic change.

For example, a 60-year old employee requires twice the amount of light required by a 20-year old colleague. With the new LED system lights from ASK you can react optimally to all requirements and adjust the lighting on an individual basis.

You can obtain these LED system lights in 6 different lengths and almost every length in 2 different designs (230V; 230V dimming; 24V/DC). The right light for every requirement!



## NOW EVEN MORE EFFICIENT WITH 7.8 MODULES 5000 K

### SYSTEM LUMINAIRES LED-AL40 S | D | 24V

System luminaire LED-AL40 S Article no.: 603122

System luminaire LED-AL40 D Article no.: 603132

System luminaire LED-AL40 24V Article no.: 603143

Length 1150 mm  
Power/current consumption 31.2 Watts/0.14A  
Voltage/frequency 220-240 Volt/50-60 Hz  
Voltage/direct current 24 Volt/DC (with 603143)

Illuminant 4x7.8W/5000 K module  
Scope of supply Plug-in system without cable, (M12 A-coding 5-pole with 603143)

Housing with mounting slot and switch Anodised aluminium/  
(no switch with 24V) System of protection IP20

### Illuminance LED-AL 40 S | D

Distance	E average (Lux)	E max (Lux)
750 mm	2003 lx	2896 lx
1000 mm	1420 lx	1862 lx
1250 mm	1045 lx	1285 lx
1500 mm	795 lx	932 lx

With desktop size 1200mm x 600mm  
With LED-AL40 24V approx. 10% less  
Colour rendering index CRI ~ 85

603122

### SYSTEM LUMINAIRES LED-AL50 S | D | 24V

System luminaire LED-AL50 S Article no.: 603123

System luminaire LED-AL50 D Article no.: 603133

System luminaire LED-AL50 24V Article no.: 603144

Length 1435 mm  
Power/current consumption 39 Watts/0.20A  
Voltage/frequency 220-240 Volt/50-60 Hz  
Voltage/direct current 24 Volt/DC (with 603144)

Illuminant 5x7.8W/5000 K module  
Scope of supply Plug-in system without cable, (M12 A-coding 5-pole with 603144)

Housing with mounting slot and switch Anodised aluminium/  
(no switch with 24V) System of protection IP20

### Illuminance LED-AL 50 S | D

Distance	E average (Lux)	E max (Lux)
750 mm	2081 lx	3082 lx
1000 mm	1517 lx	2061 lx
1250 mm	1146 lx	1468 lx
1500 mm	891 lx	1090 lx

With desktop size 1600mm x 600mm  
With LED-AL50 24V approx. 10% less  
Colour rendering index CRI ~ 85

603123

## LIGHT COLOUR

Standard is 5000K neutral white  
(equates to fluorescent lamp light colour 850) CRI ~ 85  
Special version with 6500K (equates to light colour 965) possible. CRI >90!  
Blue light equals productivity!

Blue light has a stimulating effect, speeds up reactions, enhances performance!  
Studies show that productivity increases by up to 15% for example with 6500K!

### Illuminance LED-AL 60 D

Distance	E average (Lux)	E max (Lux)
750 mm	2119 lx	3161 lx
1000 mm	1575 lx	2180 lx
1250 mm	1212 lx	1595 lx
1500 mm	958 lx	1211 lx

With desktop size 2000mm x 600mm  
With LED-AL60 24V approx. 10% less

### SYSTEM LUMINAIRE LED-AL60 S | D | 24 V

System luminaire LED-AL60 S Article no.: 603124

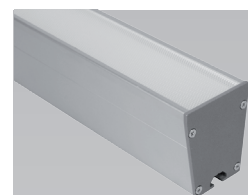
System luminaire LED-AL60 D Article no.: 603134

System luminaire LED-AL60 24V Article no.: 603145

Length 1735 mm  
Power/current consumption 46.8 Watts/0.23A  
Voltage/frequency 220-240 Volt/50-60 Hz  
Voltage/direct current 24 Volt/DC (with 603145)

Illuminant 6x7.8W/5000 K module  
Scope of supply Plug-in system without cable, (M12 A-coding 5-pole with 603145)

Housing with mounting slot and switch Anodised aluminium/  
(no switch with 24V) System of protection IP20



603124

## ADVANTAGES OF USING LED SYSTEM LIGHTS AT WORKING PLACES

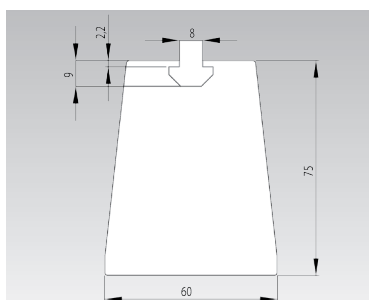
With the new LED system lights we have succeeded in further improving our successful workplace lights in many respects with reflector grid, electronic ballast and T5 illuminant. Through the power consumption savings alone, amortisation is possible after a good year.

The following advantages speak in favour of LED system lights

- Energy savings of up to 60%
- Service life of the illuminant of up to 50000h
- Up to 20% more light in comparison to T5 illuminants
- Very compact design
- Also available as a 6500K (CRI>90) variant
- Available as a 230V and 24V version
- Also available with dimmable implementation



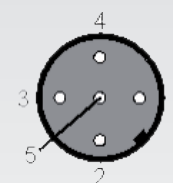
LED system luminaires available in 6 lengths from 300mm to 1735mm



Very compact design with practical mounting slot



Connector M12; 5-pole with 24V version.



1=not assigned  
2=not assigned  
3=0V  
4=24V  
5=not assigned



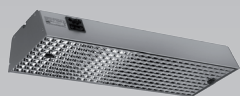
Plug and receptacles for cable with system plug also for implementation with multiple lights. Microprism panel and diffuser foil for even illumination of the working area



Different attachment and combination possibilities



On/off switch and continuous fastening slot in a highly compact aluminium housing. Switch simultaneously enables stepless dimming of the lights (230V)



### SYSTEM LUMINAIRE AL36S ELECTRONIC

#### Illuminance AL36S electronic

	Article no.:	603046
Length		457 mm
Power		36 Watts
Voltage/frequency		220-240 Volt/50;60 Hz
Illuminant		1x TC-L 36 W
Scope of supply		Housing switch, system plug, reflector grid, without cable
Housing material		Anodised aluminium

Distance	E average (Lux)	E max (Lux)
750 mm	775 lx	1094 lx
1000 mm	484 lx	613 lx
1250 mm	322 lx	391 lx
1500 mm	227 lx	268 lx

#### EB and illuminant



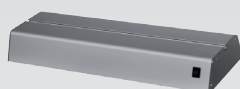
### SYSTEM LUMINAIRE AL36S SW ELECTRONIC

#### Illuminance AL36S sw electronic

	Article no.:	603045
Length		457 mm
Power		36 Watts
Voltage/frequency		220-240 Volt/50;60 Hz
Illuminant		1x TC-L 36 W
Scope of supply		Housing switch, system plug, reflector grid, without cable
Housing material		Anodised aluminium

Distance	E average (Lux)	E max (Lux)
750 mm	775 lx	1094 lx
1000 mm	484 lx	613 lx
1250 mm	322 lx	391 lx
1500 mm	227 lx	268 lx

#### EB and illuminant



### SYSTEM LUMINAIRE AL55S ELECTRONIC

#### Illuminance AL55S electronic

	Article no.:	603061
Length		665 mm
Power		55 Watt
Voltage/frequency		220-240 Volt/50; 60 Hz
Illuminant		1x TC-L 55 W
Scope of supply		Housing switch, system plug, reflector grid, without cable
Housing material		Anodised aluminium

Distance	E average (Lux)	E max (Lux)
750 mm	1256 lx	1724 lx
1000 mm	788 lx	987 lx
1250 mm	527 lx	637 lx
1500 mm	327 lx	438 lx

#### EB and Illuminant



### SYSTEM LUMINAIRE AL78S ELECTRONIC

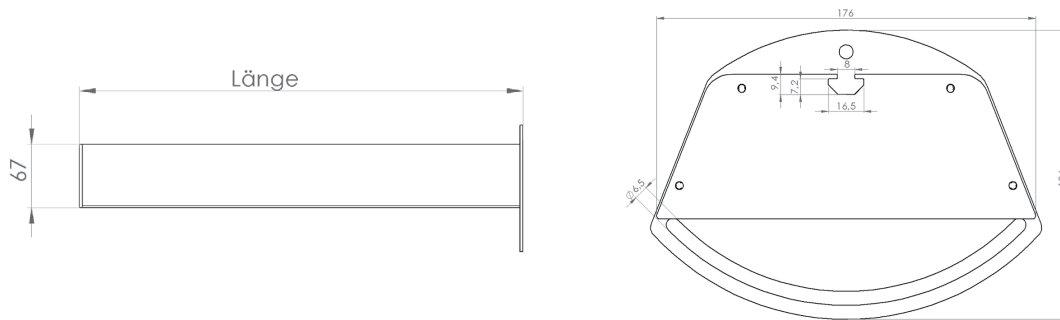
#### Illuminance AL78S electronic

	Article no.:	603024
Length		899 mm
Power		78 Watt
Voltage/frequency		220-240 Volt/50; 60 Hz
Illuminant		2xT5-L 39 W
Scope of supply		Housing switch, system plug, reflector grid, without cable
Housing material		Anodised aluminium

Distance	E average (Lux)	E max (Lux)
750 mm	1679 lx	2146 lx
1000 mm	1078 lx	1305 lx
1250 mm	731 lx	869 lx
1500 mm	522 lx	609 lx

#### EB and Illuminant





### Workplace system luminaires

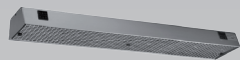
In order to enable your employees to perform work that is gentle on their eyes and fatigue-free, it is necessary to provide high quality lighting at the assembly stations.

These system lights are used individually or in various combinations, e.g. at the workstations. The electronic versions in particular (with electronic ballast EB) offer you numerous advantages:

25%-30% lower energy consumption, flicker-free light, approx. 50% longer light service life, (with EB up to 20,000 h compared to max. 12,000 h with LLB).



**The right light for every desk width!**  
System lights in standard lengths from 465mm to 1499mm  
(special sizes possible)



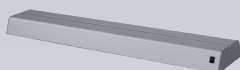
## SYSTEM LUMINAIRE AL108S ELECTRONIC

	Article no.: 603053
Length	1200 mm
Power	108 Watts
Voltage/frequency	220-240 Volt/50; 60 Hz
Illuminant	2xT5-L 54 W
Scope of supply	Housing switch, system plug, reflector grid, without cable
Housing material	Anodised aluminium

### Illuminance AL108S electronic

Distance	E average (Lux)	E max (Lux)
750 mm	2105 lx	2746 lx
1000 mm	1397 lx	1735 lx
1250 mm	972 lx	1178 lx
1500 mm	705 lx	834 lx

### EB and Illuminant



## SYSTEM LUMINAIRE AL160S ELECTRONIC

	Article no.: 603076
Length	1499 mm
Power	160 Watts
Voltage/frequency	220-240 Volt/50; 60 Hz
Illuminant	2xT5-L 80 W
Scope of supply	Housing switch, system plug, reflector grid, without cable
Housing material	Anodised aluminium

### Illuminance AL160S electronic

Distance	E average (Lux)	E max (Lux)
750 mm	775 lx	1094 lx
1000 mm	484 lx	613 lx
1250 mm	322 lx	391 lx
1500 mm	227 lx	268 lx

### EB and Illuminant



## SYSTEM LUMINAIRE AL36S US ELECTRONIC

	Article no.: 603106
Length	457 mm
Power	36 Watts
Voltage/frequency	120-277 Volt/50 - 60 Hz
Illuminant	1x TC-L 36 W
Scope of supply	Housing switch, system plug, reflector grid, without cable
Housing material	Anodised aluminium

### Illuminance AL36S US electronic

Distance	E average (Lux)	E max (Lux)
750 mm	775 lx	1094 lx
1000 mm	484 lx	613 lx
1250 mm	322 lx	391 lx
1500 mm	227 lx	268 lx

### EB and Illuminant



## SYSTEM LUMINAIRE AL78S US ELECTRONIC

	Article no.: 603111
Length	899 mm
Power	78 Watts
Voltage/frequency	120-277 Volt/50 - 60 Hz
Illuminant	2xT5-L 39 W
Scope of supply	Housing switch, system plug, reflector grid, without cable
Housing material	Anodised aluminium

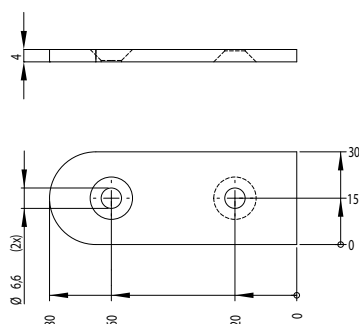
### Illuminance AL78S US electronic

Distance	E average (Lux)	E max (Lux)
750 mm	1679 lx	2146 lx
1000 mm	1078 lx	1305 lx
1250 mm	731 lx	869 lx
1500 mm	522 lx	609 lx

### EB and Illuminant







## STRAP for attaching system luminaires

for EB and LED

Article no.: 99900651

## Material

Galvanized steel



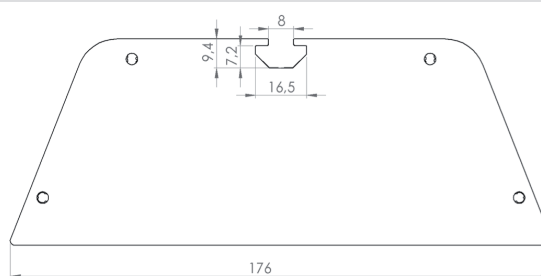
## Workplace system lumineux

In order to enable your employees to perform work that is gentle on their eyes and fatigue-free, it is necessary to provide high quality lighting at the assembly stations.

These system luminaires are used individually or in various combinations, e.g. at the workstations.

The electronic versions in particular (with electronic ballast EB) offer you numerous advantages:

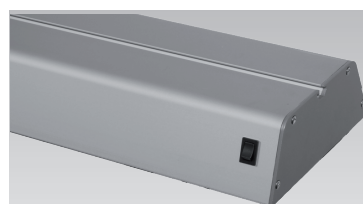
25%-30% lower energy consumption, flicker-free light, approx. 50% longer light service life, (with EB up to 20,000 h compared to max. 12,000 h with LLB).



Reflector grid secured  
with knurled screw



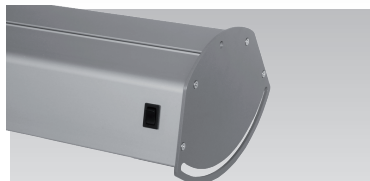
High quality reflector grid for glare and shadow-free light



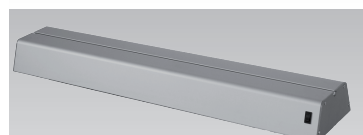
All-round fastening slot  
in the aluminium housing



Plug and receptacles for cable with system connector also for application with multiple lights



Swivel fastening  
for flexible adjustment



On/off switch on the housing

## CIRCLINE MAGNIFIER 120MM

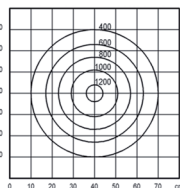
**RLL120** Article no.: **603208**

**Light distribution** Symmetrical  
**Lens diameter** 120mm  
**Operating device** Conventional/LLB  
**Mains connection cable** 1.5m with shockproof plug  
**Switch** In the lamp head  
**Fastening** Metal table clamp approx. 60mm

T9-R  
 G10q  
 (LCOS:  
 FC-22-G10q-29)  
 1350 lm (840)  
 1300 lm (865)

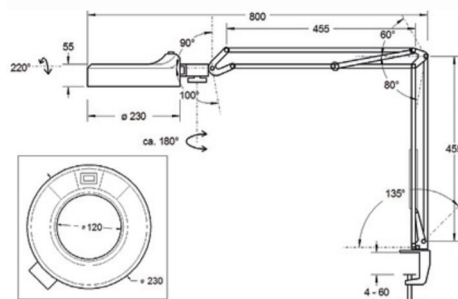
2,5 kg

230-240V/50-60Hz



Isoluxdiagramm 629  
 Meßabstand 30 cm.

ISOLUX MAP 629 at 30 cm  
 above surface.

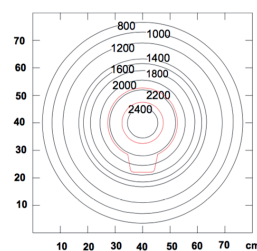
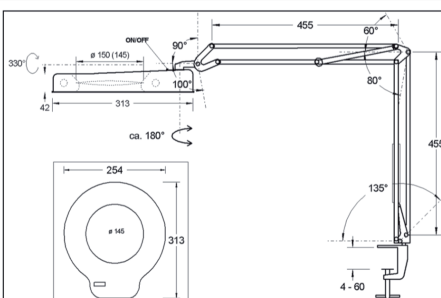


Cover

## CIRCLINE MAGNIFIER 150MM

**RLL150** Article no.: **603210**

**Light distribution** Symmetrical  
**Lens diameter** 150mm  
**Operating device** Electronic/EB  
**Mains connection cable** 1.5m with shockproof plug  
**Switch** In the lamp head  
**Fastening** Metal table clamp approx. 60mm



1x T5-R 22W / 2GX13  
 (LCOS: FC-22-2GX13-16)  
 1 x 1900 lm (840)  
 1 x 1800 lm (865)  
 Isoluxdiagramm,  
 Meßabstand 30 cm  
 Isoluxmap @ 30 cm  
 840 = E(x) x 1,0  
 865 = E(x) x 0,95

ca. 2,7 kg  
 220-240V~/  
 50-60Hz

IP 20



Luminaire cover

Lense cover

## CIRCLINE MAGNIFIERS

With our circline magnifiers you obtain a high quality "optical package" for constantly high visual perception speeds, increased viewing comfort and fatigue-free work with great value for money. Universally applicable in numerous sectors.

## LED-RLL BASIC

### LED-circline magnifier luminaire 8W, 3-diopters

<b>Product data</b>	Standard model with high-quality glass lens Ø 120 mm, 3-diopters = 175% magnification, tiltable lighting head Smoothly adjustable articulated arm with encapsulated springs Incl. metal table clamp 60 mm and lens cover 21 circular arranged NICHIA®-LEDs 5000K, CRI >80 (type 85) Dimmable within three steps
<b>Colour</b>	white RAL 9010

<b>LED-RLL BASIC 3-Dio</b>	<b>Article no.:</b> 603226
----------------------------	----------------------------

## ACCESSORIES

<b>Screw-down base</b>	<b>Article no.:</b> 603229
------------------------	----------------------------

<b>Wall bracket</b>	<b>Article no.:</b> 603230
---------------------	----------------------------

## LED-RLL PRO

### LED-circline magnifier luminaire 8W, 3- or 5-diopters

<b>Product data</b>	Pro-model with high-quality glass lens Ø 120 mm, 3-diopters = 175% magnification or 5-diopters = 225% magnification Sturdy friction arm with integrated spring support Lighting head with 3D-joint Incl. screw-down base 60x60 mm and lense cover 21 circular arranged NICHIA®-LEDs 5000K, CRI >80 (typ. 85) Dimmable within three steps
<b>Colour</b>	silver grey RAL 9006

<b>LED-RLL PRO 3-Dio</b>	<b>Article no.:</b> 603220
--------------------------	----------------------------

<b>LED-RLL PRO 5-Dio</b>	<b>Article no.:</b> 603225
--------------------------	----------------------------

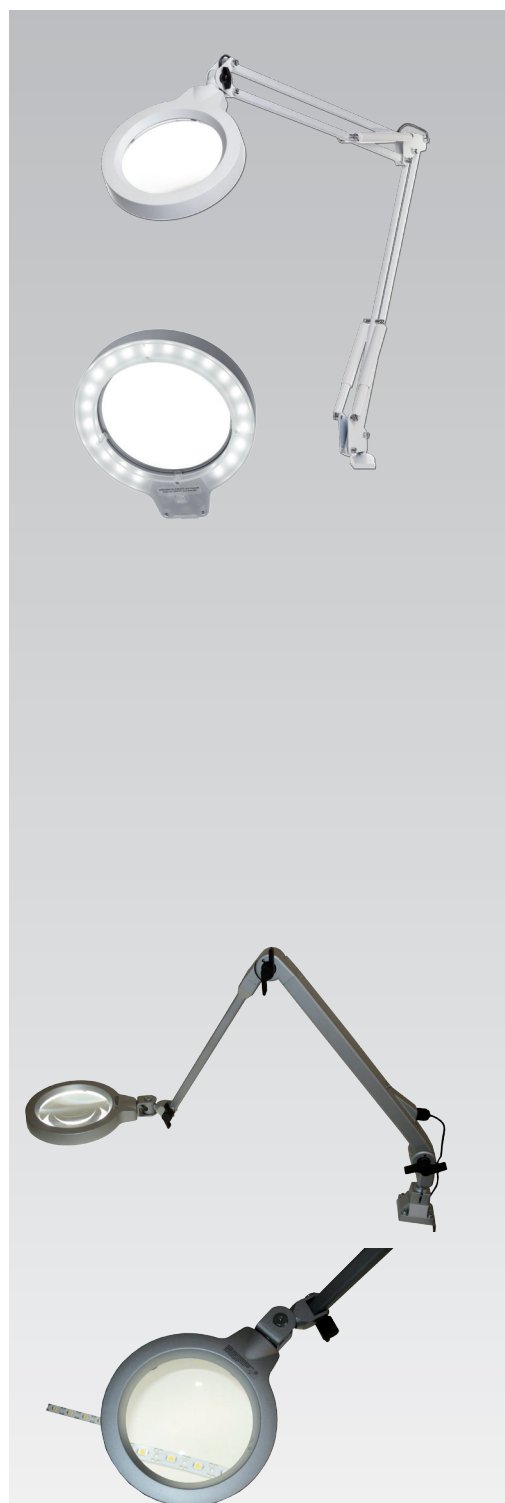
## ACCESSORIES

<b>Wall bracket</b>	<b>Article no.:</b> 603269
---------------------	----------------------------

<b>Table clamp 0-44mm</b>	<b>Article no.:</b> 603276
---------------------------	----------------------------

<b>Table clamp 16-85mm</b>	<b>Article no.:</b> 603271
----------------------------	----------------------------

<b>Heavy table base</b>	<b>Article no.:</b> 603272
-------------------------	----------------------------



## LED-LARGE-VIEW ILLUMINATED MAGNIFIER

3-diopter rectangular-shaped lens

**Product data** High quality, crown optical glass lens 171 x 108 mm with 3 diopters for comfortable vision. Perfect size for several hours of use.  
With exchangeable NARVA LED-light 6W, lamp base 2G11, 160°, with matted glass tube for diffused light distribution and for the protection of the LEDs.  
Top quality LEDs: NICHIA® cool daylight 6500K/CRI 80 (970 lm, EEK A++)  
Manufacturers warranty for 6 years for LED-illuminant (55.000h)  
Up to 2500 lx in 30 cm operating distance -  
Clearly exceeds the luminous efficiency of a 18W TC-L lamp with 60% less energy consumption  
Various mounting options as accessories, can be ordered separately

**Colour** Colour white RAL 9010

**LED converter** Integrated constant current-LED-converter, no retrofit!

<b>LED Large View Illuminated Magnifier incl. LED light 6500K</b>	<b>Article no.:</b> 603227
---	----------------------------

<b>Replacement LED-light SL-L 6W/865</b>	<b>Article no.:</b> 603228
--	----------------------------

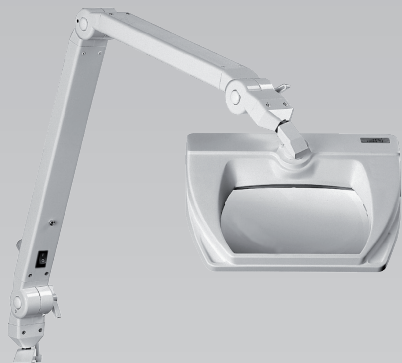
### ACCESSORIES

<b>Screwdown base</b>	<b>Article no.:</b> 603229
-----------------------	----------------------------

<b>Wall bracket</b>	<b>Article no.:</b> 603230
---------------------	----------------------------

<b>Table clamp 75mm</b>	<b>Article no.:</b> 603231
-------------------------	----------------------------

<b>Heavy table base</b>	<b>Article no.:</b> 603232
-------------------------	----------------------------



## LED-RLL MASTER

### LED circular illuminated magifier 12W

<b>Product data</b>	Innovative LED-circular magnifier with variable segment control Large field of view due to high quality glass lens Ø 150 mm, 3-diopters = 175% magnification 48 x High-CRI-LEDs in ring shape, up to zu 6000 lx at a distance of 15cm 5000K, CRI >90 for best, almost daylight-like colour rendering Lighting head with 3-D-articulation point, sturdy friction-arm
<b>Master-Control</b>	Continuously dimmable via switch 1 in lighting head Segmentally switchable via switch 2 for several light scenes (all ON, sidelight, oblique light only by posterior segment) For the visualisation or various objects
<b>Colour</b>	silver/black, incl. screwdown base 60x60 mm

<b>LED-RLL Master 3-Dio</b>	<b>Article no.:</b> 603220
-----------------------------	----------------------------

## ACCESSORIES

<b>Wall bracket</b>	<b>Article no.:</b> 603269
<b>Table clamp 0-44mm</b>	<b>Article no.:</b> 603276
<b>Table clamp 16-85mm</b>	<b>Article no.:</b> 603271
<b>Heavy table base</b>	<b>Article no.:</b> 603272





## ALL-ROUND LED

### Universal Tasklights 14/28W

#### Product data

Sturdy, high quality workplace lighting  
with high efficient LED-light engines - up to 150 lm/W,  
Optionally stepless dimmable (1-100%)  
Glare control via microprismatic optics + high tech diffusor foil  
Gracile lighting head with small cross-section  
and sturdy, but easy-going ball-and-socket joint

#### Colour

Silver grey RAL 9006, incl. screw-down base 60x60 mm  
5000K, CRI >80, system of protection IP20

#### Light colour

Universally applicable at assembly workplaces and test stations with  
very high light requirement

#### Lighting head

With 14W, 335mm wide | with 28W, 577mm wide

ALLROUND 14W/5000K, nonDIM

Article no.:

603265

ALLROUND 14W/5000K, DIM

Article no.:

603267

ALLROUND 28W/5000K, DIM

Article no.:

603268

## ACCESSORIES

Wall bracket

Article no.:

603269

Table clamp 0-44 mm

Article no.:

603276

Table clamp 16-85 mm

Article no.:

603271

Heavy table base

Article no.:

603272

## M-LED

### Universal Tasklight IP 54

#### Product data

Compact all-round luminaire  
with higher system of protection including 12W LED-Power  
Spacious planar lighting due to 3 row arranged midpower-LEDs  
Light guidance and glare control through innovative 90° multiple lense  
High energy saving comparing to 2x18W TC-L  
with considerably more light

#### Light colour

#### Colour

5000K, CRI >80, system of protection: IP 54

#### LED driver

Silver, incl. screwdown base 60x60 mm  
(more fastening accesories see ALLROUND LED)

Integrated in arm, 220 - 240V~/50-60Hz, nonDIM

M-LED 12W, nonDIM

Article no.:

603219

### M-LITE LED IP 65

### LED friction-arm machine luminaires 12W

#### Product data

Powerful machine luminaires with  
6x1W HiPower LED-module and 25° angle of illumination  
Luminous efficiency clearly exceeds 50W halogen  
- up to 5800 lux in 50 cm operating distance  
with concurrently high energy savings  
Extremely low-maintenance:  
Long LED-lifetime, up to 40.000 h and more.  
Cool lighting head, especially no heat development at the protective  
glass cover preventing that coolants, lubricants etc. burn in  
Switch arranged easy-reach at lighting head

#### Mounting

Fastening via four base-integrated boreholes

#### Colour

Head: naturally anodized, arm: silver

#### LED converter

With version RTL integrated in mounting base,  
100-240V ~ / 50-60Hz  
With versions RL und RTL integrated, 24V AC/DC,  
Class of protection III

RTL | long radius of swivel arm 100-240V

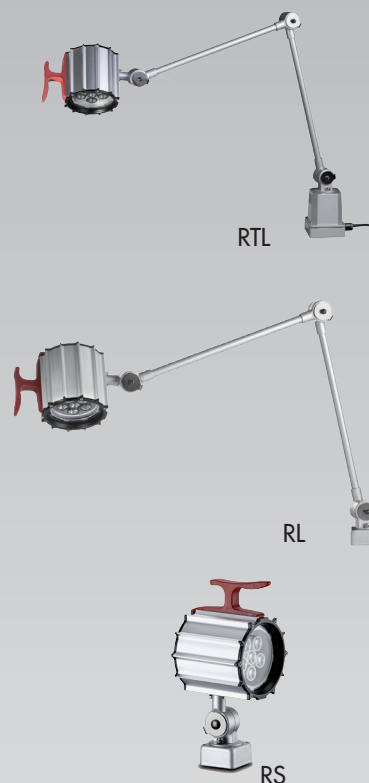
Article no.: 603262

RL | short radius of swivel arm 24V

Article no.: 603263

RS | short radius of swivel arm 24V

Article no.: 603264



## COOL-FLEX LED

All-purpose flexible arm model 14W

### Product data

Application at all kind of workplaces with normal ambient conditions. Cost-effective workplace lighting. Evenly planar lighting through LED-Light engine + grooved bezel approx. 20% more light with less than 20% energy consumption than a comparable compact fluorescent lamp 18W Dimmable through rotary encoder from 100 to 25%. Sturdy, fully flexible metal tube ('gooseneck') Length 500 mm

### Mounting

Screw-on version - clamp, wall bracket or magnetic base as accessory. Only for fastening on horizontal surfaces.

### Light colour

Light colour 5000K, CRI >80, System of protection: IP 20

### Colour

Colour: silver/black

### LED driver

Integrated in the base of luminaire, 100 - 240V~/50-60Hz

### COOL-Flex LED, screw-on version

Article no.: 603209

## ACCESSORIES

### Wall bracket

Article no.: 603215

### Table clamp

Article no.: 603214

### Magnetic base

Article no.: 603213

## LED FLEX VARIO

LED flexible tube luminaire 4W

### Product data

By rotating the lighting head the angle of illumination can be focused from approx. 4 up to 48° Cold white LED mit prefixed glass lense Very variable through extra-long metal flexible tube: 700 mm Lighting head, switch and cable entry Sealed against dust, dirt, and liquid splashes

### Colour

black

### LED driver

Integrated in the base of luminaire, 100 - 240V~/50-60Hz

### LED-FLEX VARIO, screw-on version

Article no.: 603211

## ACCESSORIES

### Table clamp 0-40mm for VARIO

Article no.: 603216

### Magnetic base for VARIO

Article no.: 603217



### LED FLEX3 BASIC

#### LED flexible tube 3W

#### Product data

Universally applicable,  
Light is comparable with 20W halogen luminaire)  
Cold white LED-module 3x1W + triple lens  
with 30° angle of illumination  
Sturdy, flexible metal tube: 500 mm  
System of Protection IP 20

#### Colour

black

#### LED driver

Integrated in the base of luminaire, 100 - 240V~/50-60Hz

#### LED-FLEX BASIC, screw-on version

Article no.: 603212

### ACCESSORIES

#### Table clamp 0-40mm for BASIC

Article no.: 603214

#### Magnetic base for BASIC

Article no.: 603213

### LED FLEXIBLE TUBE LAMPS

The LED flexible arm lamp offers you bright, concentrated LED light.  
The flexible tube arm makes this LED lamp a highly diverse  
machine and workplace lamp.  
Low energy consumption and a long LED service life  
are additional advantages of this lamp

### LED-FLEX6 MFT

#### LED flexible tube lamp 6W, IP 65

#### Product data

Versatile machine lamp suitable even for  
harsh environmental conditions  
Concentrated, powerful point lighting without heat development  
LED module 3 x 2W with lense 30° (comparable with 35W halogen)  
Colour temperature approx. 5700K cold white  
Adjustable via sturdy, flexible metal tube 500 mm  
Lighting head with two-way swivel joint

#### Mounting

Screw-on version -  
Clamp, wall bracket or magnetic base as accessories

#### Colour

black

#### LED driver

Integrated in the base of luminaire, 100 - 240V~/50-60Hz

#### LED-FLEX6 MFT, screw-on version

Article no.: 603218

### ACCESSORIES

#### Wall bracket

Article no.: 603215

#### Table clamp

Article no.: 603214

#### Magnetic base

Article no.: 603213



### LED STRIPS SET

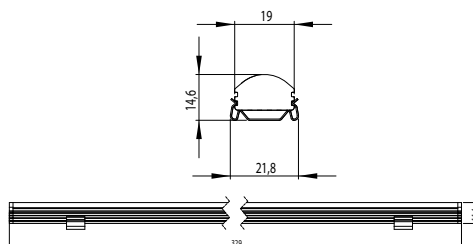
LED strips set 33 | 230 V

Article no.: 603200

LED strips set 33 | 24V

Article no.: 6032001

Length	330 mm
Power / voltage	5.76 Watts / 230V
Number of LEDs	18
Luminous flux	370 lm
Scope of supply	Incl. LED strip, operating device, 1.5m supply line, switch, retainer clips, Euro plug
Housing material	Anodised aluminium



### LED STRIPS SET

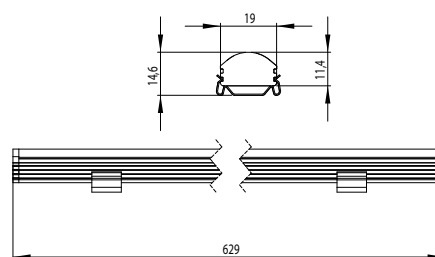
LED aluminium strip 63 | 230 V

Article no.: 603203

LED aluminium strip 63 | 24V

Article no.: 6032031

Length	630 mm
Power / voltage	11.52 Watts / 230V
Number of LEDs	36
Luminous flux	740 lm
Scope of supply	Incl. LED strip, operating device, 1.5m supply line, switch, retainer clips, Euro plug
Housing material	Anodised aluminium



### LED STRIPS SET

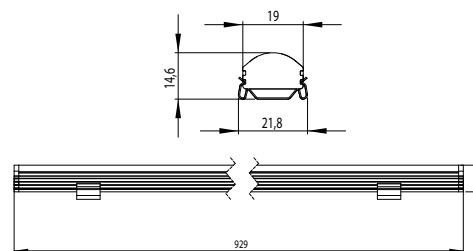
LED aluminium strip 93 | 230 V

Article no.: 603204

LED aluminium strip 93 | 24V

Article no.: 6032041

Length	930 mm
Power / voltage	17.28 Watts / 230V
Number of LEDs	54
Luminous flux	1110 lm
Scope of supply	Incl. LED strip, operating device, 1.5m supply line, switch, retainer clips, Euro plug
Housing material	Anodised aluminium



### LED STRIPS SET

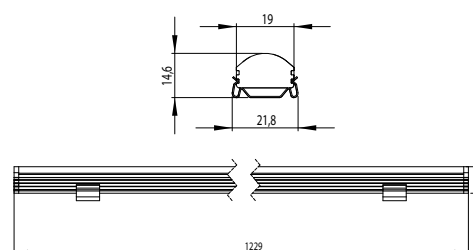
LED aluminium strip 123 | 230 V

Article no.: 603206

LED aluminium strip 123 | 24V

Article no.: 6032061

Length	1230 mm
Power / voltage	23.04 Watts / 230V
Number of LEDs	72
Luminous flux	1480 lm
Scope of supply	Incl. LED strip, operating device, 1.5m supply line, switch, retainer clips, Euro plug
Housing material	Anodised aluminium





### SRL T70 LED 14 | 28 | 42W

Tube luminaires IP 67

#### Product data

Robust and waterproof  
Suitable for the illumination of machine tools, machining centres etc.  
as well as for diverse industrial applications.  
Incl. linear cool-white LED-light engines - approx. 20% more light with  
more than 20% energy-saving as comparable compact-LS  
Integrated LED-driver for direct connection to the mains supply  
24V transparent protective tube of borosilicate glass  
with high breakage resistance.  
Resistant against oils, lubricants and coolants.  
Integrated prism-bezel for glare control  
Light emission over the entire length of the tube luminaire

#### Scope of supply

Without supply line, incl. cable gland M16  
Incl. robust rotor-brackets (GFRP)

Versions for voltage 100 - 240V~ | 50-60Hz

T70 LED 14W /  
tube length 380 mm

Article no.: 603251

T70 LED 28W /  
tube length 658 mm

Article no.: 603256

T70 LED 42W /  
tube length 958 mm

Article no.: 603261

Versions for voltage 24V AC/DC

T70 LED 14W /  
tube length 380 mm

Article no.: 603258

T70 LED 28W /  
tube length 658 mm

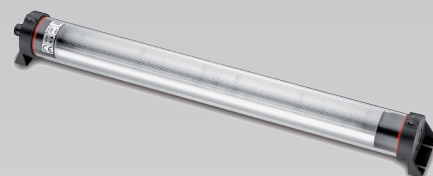
Article no.: 603255

T70 LED 42W /  
tube length 958 mm

Article no.: 603260



14W



28W

## POWER STRIPS

**Socket strip STL3**  
**Connection** **Article no.: 604005**  
3 sockets

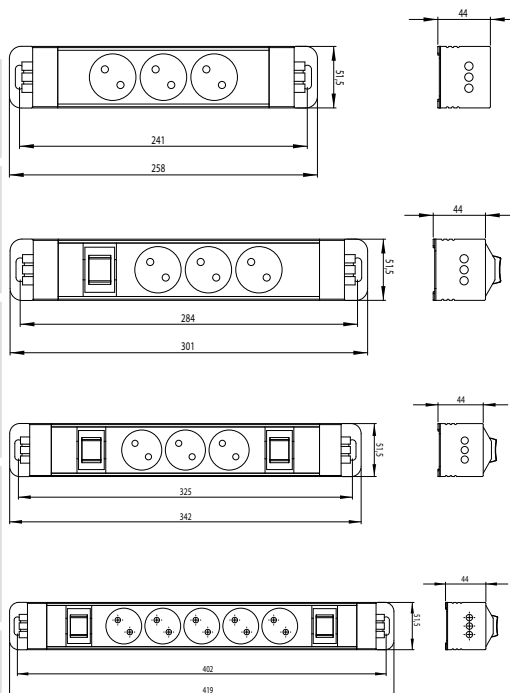
**Socket strip STL3SE**  
**Connection** **Article no.: 604022**  
3 sockets,  
input switch

**Socket strip STL3SESA**  
**Connection** **Article no.: 604031**  
3 sockets,  
input switch,  
output switch

**Socket strip STL5SESA**  
**Connection** **Article no.: 604042**  
5 sockets,  
input switch,  
output switch

**Scope of supply** Incl. fastening plate,  
without cable

**Housing material** Anodised aluminium



## CONNECTON KIT for modular power strip

**Connection kit**  
**for modular power strip** **Article no.: 604034**

**Application** One connection kit  
required per individual  
socket strip, configure  
desired power bar with  
individual socket strips

**Housing material** Plastic



## CONNECTOR AND RECEPTACLE for cable assembly

**System connector** **Article no.: 605061**

**System connector**  
**and receptacle** **Article no.: 605062**

**Application** With these parts you can  
assemble your cable  
according to your  
application case

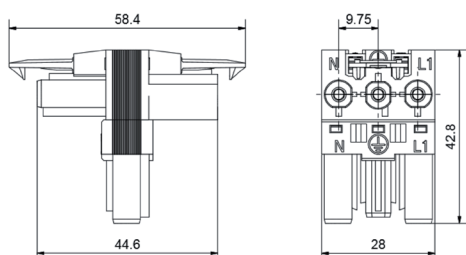
**Material** Plastic PA, black



605062



605061



### T-DISTRIBUTOR FOR PLUG SYSTEM T-I3

<b>T-distributor</b>	<b>Article no.:</b>	<b>605063</b>
<b>Connection</b>	1 input and 2 socket outputs	
<b>Material</b>	Plastic PA, black	



### CONNECTION CABLE / PLUG

<b>Connection cable S5M</b>	<b>Article no.:</b>	<b>605010</b>
<b>Connection</b>	System receptacle, mains plug	
<b>Length</b>	5 metres	



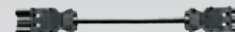
605010

<b>Connection cable 5M</b>	<b>Article no.:</b>	<b>605020</b>
<b>Connection</b>	System receptacle, without plug	
<b>Length</b>	5 metres	



605020

<b>Connection cable WS3M</b>	<b>Article no.:</b>	<b>605030</b>
<b>Connection</b>	System connector, system receptacle	
<b>Length</b>	3 metres	



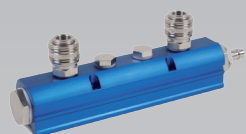
605030 - 605055

<b>Connection cable WS2M</b>	<b>Article no.:</b>	<b>605040</b>
<b>Connection</b>	System connector, system receptacle	
<b>Length</b>	2 metres	

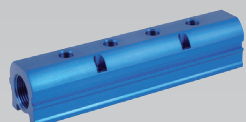
<b>Connection cable WS1M</b>	<b>Article no.:</b>	<b>605050</b>
<b>Connection</b>	System connector, system receptacle	
<b>Length</b>	1 metre	

<b>Connection cable WS0,5M</b>	<b>Article no.:</b>	<b>605055</b>
<b>Connection</b>	System connector, system receptacle	
<b>Length</b>	0.5 metres	

<b>Application</b>	Connection cable from power strip to system light or as a connection cable from system luminaire to system luminaire	
--------------------	--	--



606005



606050

## AIR STREAM RAIL

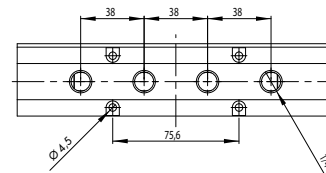
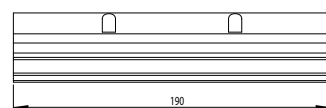
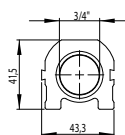
**Air stream rail LL4** Article no.: 606005

**Distribution block** Article no.: 606050

**Dimensions** L=190 mm; B= 43.5 mm  
**Operating pressure** Compressed air to max. 8 bar

**Scope of supply** (air stream rail LL4 LL4) Distributor block incl.  
retainer plate,  
1 plug-in nipple,  
2 quick-action couplings,  
2 plugs 1/4",  
1 plug 3/4",  
1 reducer 3/4" - 1/2"

**Material** Blue anodised aluminium,  
accessory  
nickel-plated brass



606050

## QUICK-ACTION COUPLING DN 7.2

**Coupling with external thread** Article no.: 606100

**Thread** G1/4"  
**Width across flats** 22mm  
**Material** Nickel-plated brass



## PLUG-IN NIPPLE with external thread DN 7.2

**Coupling with external thread** Article no.: 606130

**Thread** G1/2"  
**Width across flats** 24mm  
**Material** Nickel-plated brass

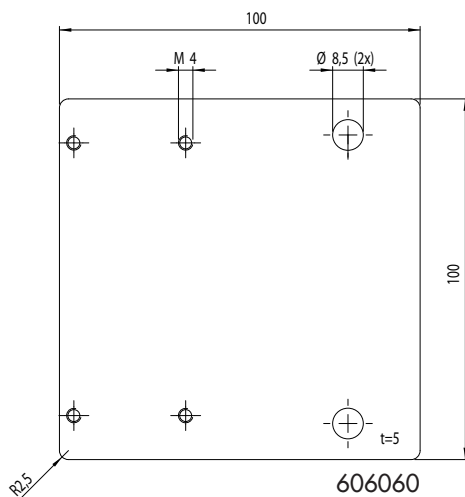


## REDUCTION NIPPLE

**Reduction nipple 3/4" - 1/2"** Article no.: 606150

**Thread** G3/4"-G1/2"  
**Width across flats** 30mm  
**Material** Nickel-plated brass





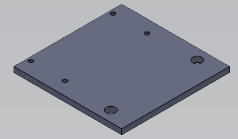
### FASTENING PLATE

Fastening plate for  
air stream rail d=5mm

Article no.: 606060

Material

Aluminium



### SEALING PLUG WITH EXTERNAL THREAD

Sealing plug with external  
thread G3/4"

Article no.: 606170

Width across flats

30mm

Sealing plug with external  
thread G1/4"

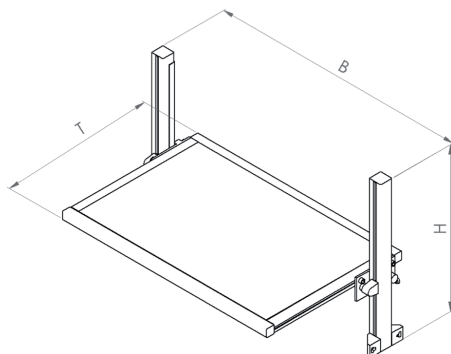
Article no.: 606180

Width across flats

17mm

Material

Nickel-plated brass



### FOOTREST

Footrest without  
bearing frame

Article no.: 608 020

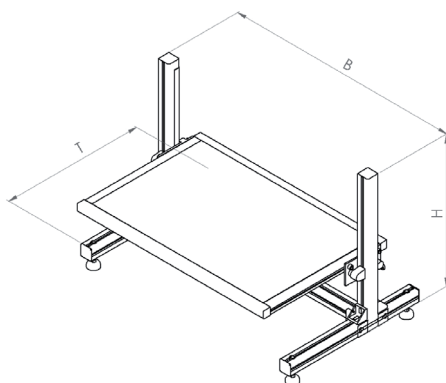
Footrest without bearing  
frame ESD



Article no.: 608030

W x D x H in mm  
Material

W=900 x D=560 x H=566  
Frame: anodised aluminium;  
chipboard coated



### FOOTREST

Footrest with  
bearing frame

Article no.: 608040

Footrest with  
bearing frame ESD



Article no.: 608050

W x D x H in mm  
Material

W=900 x D=560 x H=660  
Frame: anodised aluminium;  
chipboard coated



Conductive design per DIN EN 61340-5-1;  
suitable for use in ESD protected zones.





616005

## INFORMATION BOARD DIN A4

Article no.: 616005

<b>Equipment</b>	Incl. 1 strengthened transparent pocket, Fastening material
<b>L x W</b>	370mm x 281mm
<b>Material</b>	Sheet steel board, powder-coated, anodised aluminium frame



616010

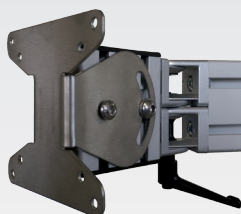
## INFORMATION BOARD 2x DIN A4

Information board 2x DIN A4 Article no.: 616010

Information board 2x DIN A4 ECO Article no.: 616015

Information board 2x DIN A4 ESD  Article no.: 616030

<b>Equipment</b>	Incl. 2 strengthened transparent pockets, fastening material
<b>L x W</b>	368mm x 560mm
<b>Material</b>	Sheet steel board, powder-coated, anodised aluminium



## TFT-MONITOR BRACKET

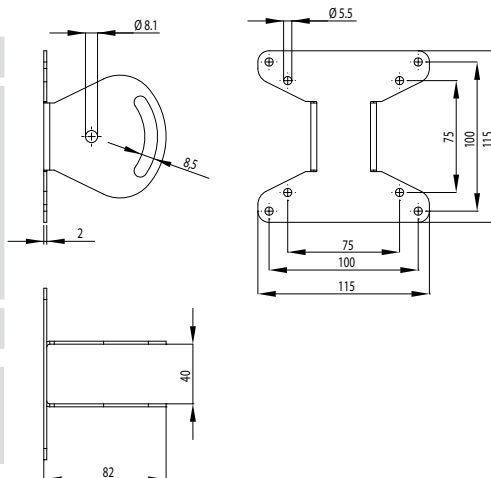
Article no.: 99900329

**Description** TFT-monitor bracket with VESA perforation for fastening a TFT-monitor at profile 40x40 Sviwel range 70°

**Material** Stainless steel

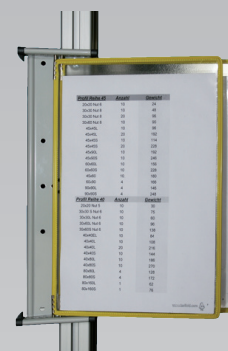


Conductive design per DIN EN 61340-5-1; suitable for use in ESD protected zones.



## DISPLAY BOARDS

Wall element	Article no.:	616100
Display board grey	Article no.:	616110
Display board blue	Article no.:	616111
Display board white	Article no.:	616112
Display board red	Article no.:	616113
Display board yellow	Article no.:	616114
Display board green	Article no.:	616115
Display board black	Article no.:	616117
Display board bordeaux	Article no.:	616118
Display board assorted colours	Article no.:	616119
Equipment	With pivots, delivery unit display boards each 10 pieces	
Material	Wall element sheet steel powder-coated	



616114




616100



610040

## BOTTLE HOLDER

Bottle holder stainless steel ESD		Article no.:	610040
Closed bottle holder (plastic)		Article no.:	610020
Open bottle holder (plastic)		Article no.:	610030





## SPRING BALANCERS

Spring balancer 0.4 - 1 kg  
Weight 0.5 kg

Article no.: 611010

Spring balancer 1 - 2 kg  
Weight 0.5 kg

Article no.: 611020

Spring balancer 2 - 4 kg  
Weight 0.7 kg

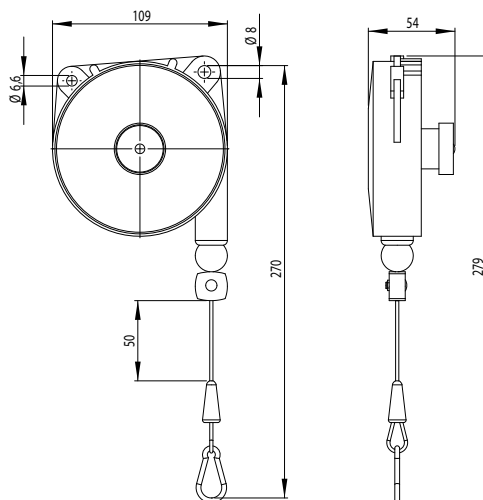
Article no.: 611030

Cable extension  
Scope of supply

1600mm  
Incl. suspension loop,  
carabiner hook

Material

Die cast aluminium  
housing



## SCREWDRIVER SUSPENSION

Screwdriver suspension  
as assembly kit

Article no.: 614010

Equipment

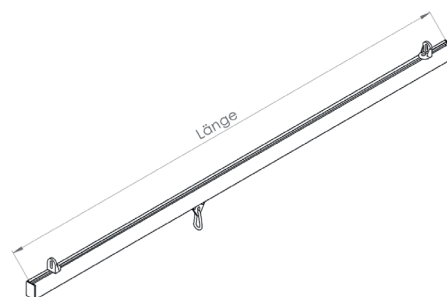
C-rail, carriage, end caps,  
fastening bracket

Length

max. 2000mm

Material

Anodised aluminium  
profile, plastic carriage



## ACCESSORIES

Tool slider for  
slot 8 and slot 10

Article no.: 614020

Material

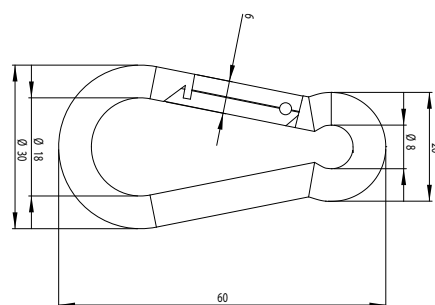
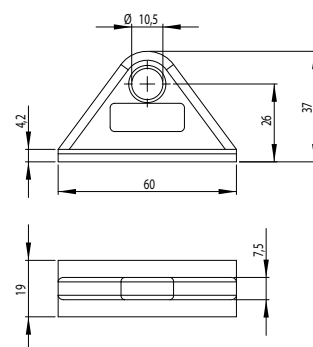
Plastic

Carabiner hooks

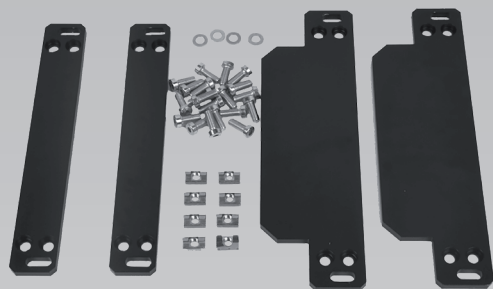
Article no.: 614030

Material

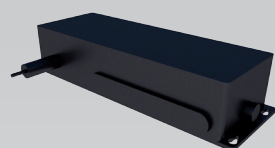
Steel galvanised







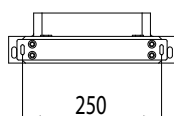
Fastening plates with screws



Control unit  
609021 | 609020 | 609023

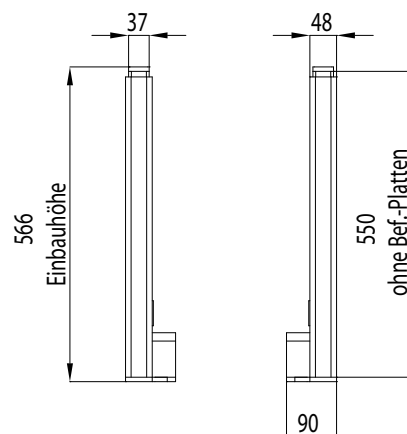


Control unit  
609010 | 609011



Bohrungsabstand  
Platte unten

Bohrungsabstand  
Platte oben



## LIFTING COLUMN SYSTEM WITHOUT MILLING GROOVE

AS ASSEMBLY KIT	Article no.:	609010
Stroke	355 mm	
Max. lift force	3000 N (each lifting column)	
Lifting speed	8mm/s	
Scope of supply	2 units lifting columns, 1 control unit, 1 manual switch, 1 fastening plate for switch, 4 fastening plates, screws	
Material	Lifting columns: Anodised Aluminium Control unit: Plastic PA, electronics Mounting plates: Steel, powder coated Fastening material: Galvanised steel	

## LIFTING COLUMN SYSTEM WITH MILLING GROOVE

AS ASSEMBLY KIT	Article no.:	609011
Stroke	355 mm	
Max. lift force	3000 N (each lifting column)	
Lifting speed	8mm/s	
Scope of supply	2 units lifting columns with milling groove, 1 control unit, 1 manual switch, 1 fastening plate for switch, 4 fastening plates, screws	
Material	Lifting columns: Anodised Aluminium Control unit: Plastic PA, electronics Mounting plates: Steel, powder coated Fastening material: Galvanised steel	

### LIFTING COLUMN SYSTEM SYNCHRONISED

<b>AS ASSEMBLY KIT</b>	<b>Article no.:</b>	<b>609021</b>
<b>Stroke</b>		355 mm
<b>Max. lift force</b>		3000 N (each lifting column)
<b>Lifting speed</b>		8mm/s
<b>Scope of supply</b>	2 units lifting columns, 1 control unit, 1 manual switch 1 drawer for manual switch 4 fastening plates, screws	
<b>Material</b>	Lifting columns: Anodised Aluminium Control unit: Plastic PA, electronics Mounting plates: Steel, powder coated Fastening material: Galvanised steel	

### LIFTING COLUMN SYSTEM SYNCHRONISED WITH MILLING GROOVE

<b>AS ASSEMBLY KIT</b>	<b>Article no.:</b>	<b>609020</b>
<b>Stroke</b>		355 mm
<b>Max. lift force</b>		3000 N (each lifting column)
<b>Lifting speed</b>		8mm/s
<b>Scope of supply</b>	2 units lifting columns with milling groove, 1 control unit, 1 manual switch 1 drawer for manual switch 4 fastening plates, screws	
<b>Material</b>	Lifting columns: Anodised Aluminium Control unit: Plastic PA, electronics Mounting plates: Steel, powder coated Fastening material: Galvanised steel	

### LIFTING COLUMN SYSTEM SYNCHRONISED QUATTRO

<b>AS ASSEMBLY KIT</b>	<b>Article no.:</b>	<b>609023</b>
<b>Stroke</b>		355 mm
<b>Max. lift force</b>		3000 N (each lifting column)
<b>Lifting speed</b>		8mm/s
<b>Scope of supply</b>	4 units lifting columns with milling groove, 1 control unit, 1 manual switch 1 drawer for manual switch 8 fastening plates, screws	
<b>Material</b>	Lifting columns: Anodised Aluminium Control unit: Plastic PA, electronics Mounting plates: Steel, powder coated Fastening material: Galvanised steel	



Application example:  
Assembly table,  
height-adjustable



Application example:  
Assembly table,  
height-adjustable

## MATERIAL TROLLEY ECONOMIC as assembly kit

**Material trolley ECONOMIC with 1 material level** Article no.: 613005

**Material trolley ECONOMIC with 2 material levels** Article no.: 613006

**Equipment** Aluminium profile 30 x 45, 4 casters, handle, other sizes or ESD on request

## MATERIAL LEVEL ECONOMIC

**Material level** Article no.: 613002

**Material level ESD**  Article no.: 613003

**Material** Anodised aluminium profile frame, HDF panel

## CORNER PIECE

**Corner piece 22,5x30**  Article no.: 613050

**Scope of supply** Corner piece incl. fastening kit

**Material** Plastic PA, black

## PROFILE 22,5 × 30

slot 8

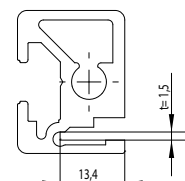
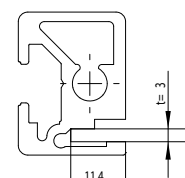
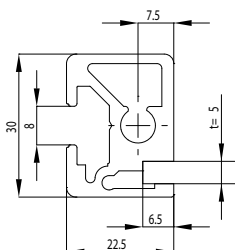
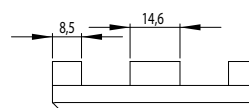
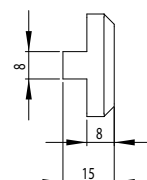
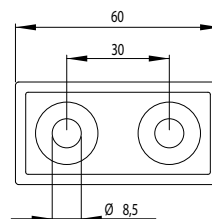
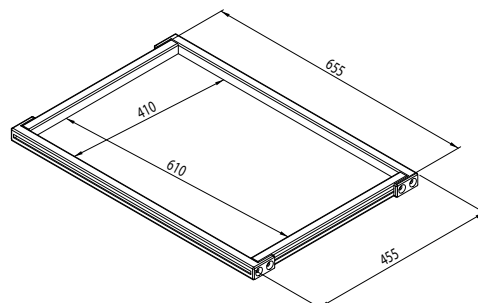
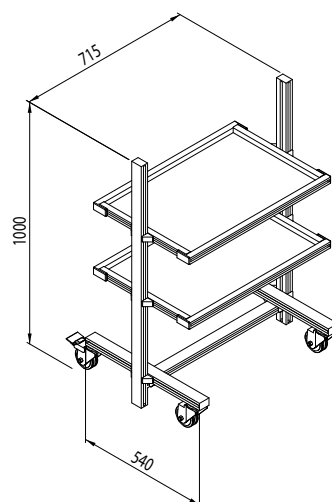
**Article no.** 201026

**I<sub>x</sub>** 1.68 cm<sup>4</sup> **W<sub>x</sub>** 1.49 cm<sup>3</sup> **Profile surface** 3.2 cm<sup>2</sup>  
**I<sub>y</sub>** 2.97 cm<sup>4</sup> **W<sub>y</sub>** 1.98 cm<sup>3</sup> **Mass** 0.81 kg/m

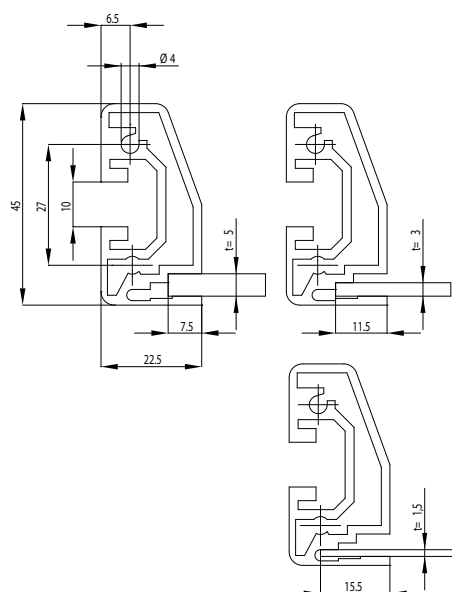
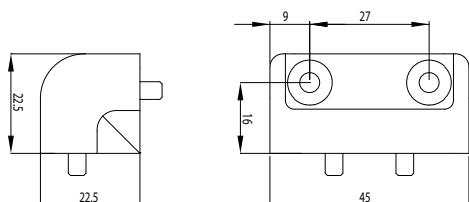
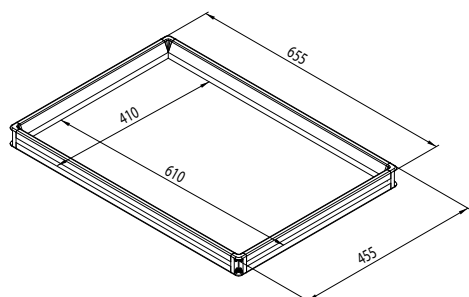
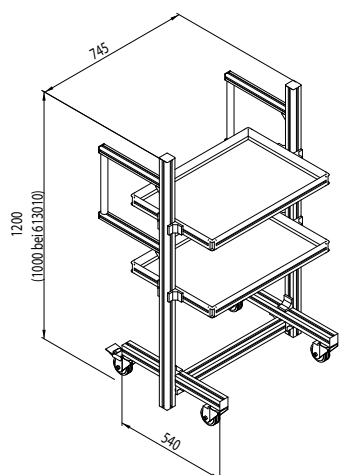
**Material** Anodised aluminium



Conductive design per DIN EN 61340-5-1; suitable for use in ESD protected zones.







### MATERIAL TROLLEY BASIC as assembly kit

**Material trolley BASIC with 1 material level** Article no.: 613010

**Material trolley BASIC with 2 material level** Article no.: 613020

**Equipment** Aluminium profile 45x45L, 4 casters, handle, other sizes or ESD on request

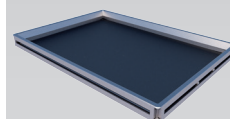


### MATERIAL LEVEL BASIC

**Material level** Article no.: 613000

**Material level ESD**  Article no.: 613001

**Material** Anodised aluminium profile frame, HDF panel

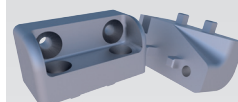


### CORNER BRACKET 22,5 x 45

**Corner bracket 22,5x45**  Article no.: 613051

**Scope of supply** Corner bracket incl. fastening kit

**Material** Zinc die cast



### PROFILE 22,5 x 45

slot 10

**Article no.** 201029

**Ix** 6.79 cm<sup>4</sup> **Wx** 2.76 cm<sup>3</sup> **Profile surface** 3.43 cm<sup>2</sup>  
**Iy** 1.66 cm<sup>4</sup> **Wy** 1.28 cm<sup>3</sup> **Mass** 0.88 kg/m

**Material** Anodised aluminium

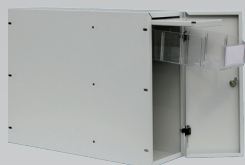


Conductive design per DIN EN 61340-5-1; suitable for use in ESD protected zones.





607020



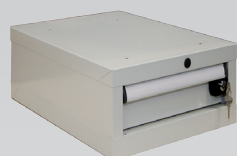
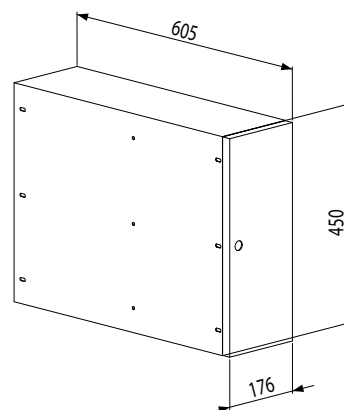
## BASE CABINET

Base cabinet, left Article no.: 607010

Base cabinet right Article no.: 607020

Equipment Incl. lock, pull-out and plastic container


Material Powder-coated sheet steel light grey (RAL 7035)



607055

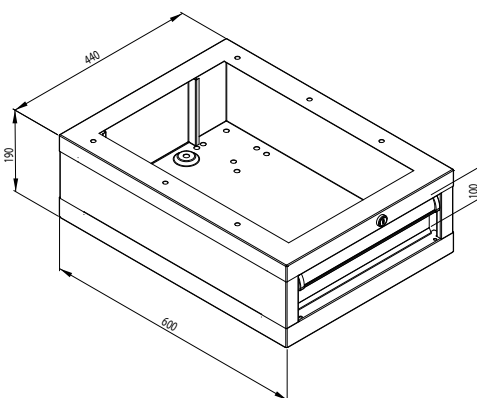
## DRAWER CABINET SB190

1 drawer 100 Article no.: 607055

1 drawer ESD  Article no.: 607056

Equipment Incl. lock


Material Powder-coated sheet steel



607057

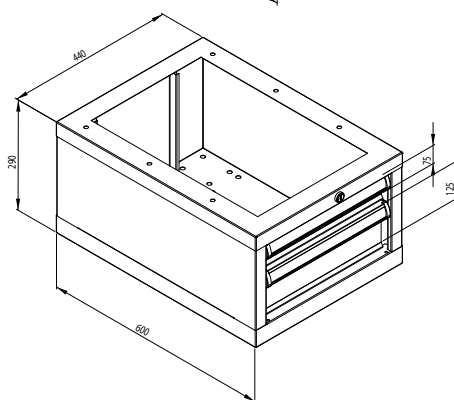
## DRAWER CABINET SB290

2 drawers 75/125 Article no.: 607057

2 drawers ESD  Article no.: 607058

Equipment Incl. lock


Material Powder-coated sheet steel



607059

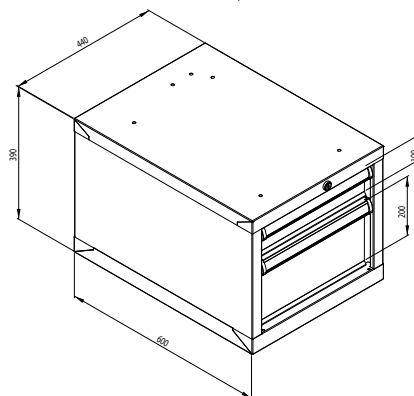
## DRAWER CABINET SB390

2 drawers 100/200 Article no.: 607059

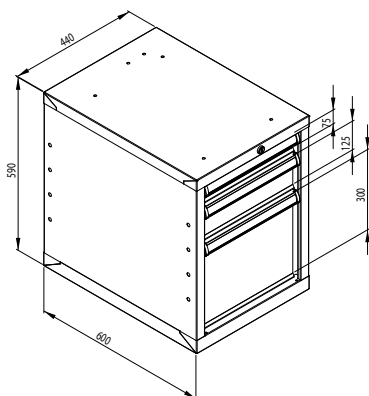
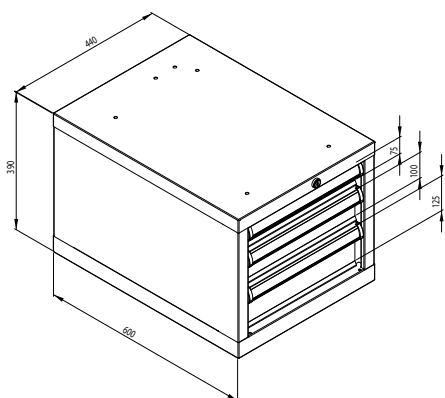
2 drawers ESD  Article no.: 607060

Equipment Incl. lock

Material Powder-coated sheet steel




Conductive design per DIN EN 61340-5-1;  
suitable for use in ESD protected zones.



### DRAWER CABINET SB 390

**3 drawers 75/100/125** Article no.: 607061

**3 drawers ESD**  Article no.: 607062

**Equipment** Incl. lock


**Material** Powder-coated sheet steel



607061

### DRAWER CABINET SB 590

**3 drawers 75/125/300** Article no.: 607064

**3 drawers ESD**  Article no.: 607065

**Equipment** Incl. lock


**Material** Powder-coated sheet steel



607064

### COLOURS:

Standard RAL 7035 (light grey)

 ESD RAL 7037 (dusty grey)

Further configurations and variants on request.

### DRAWER ARRANGEMENT

**9-compartment / 75** Article no.: 607070

For drawer H=75mm;

**Material** Powder-coated sheet steel

**9-compartment / 100/125** Article no.: 607072

For drawer H=100/125mm;

**Material** Powder-coated sheet steel

**9-compartment / 200** Article no.: 607074

For drawer H=200mm;

**Material** Powder-coated sheet steel

**Plastic boxes 15 piece** Article no.: 607076

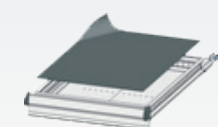
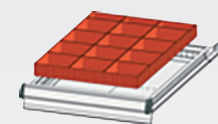
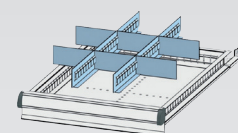
12 boxes 100x100mm/

3 boxes 100x50mm;

**Material** Plastic

**Rubber insert for drawers** Article no.: 607078

**Material** Black rubber 2mm






620100

## CLASSIC INDUSTRIAL SWIVEL CHAIRS

with flat base and casters

**WS1220** Article no.: **620100**

**WS1220 ESD**  Article no.: **620110**

<b>Equipment</b>	Flat base with casters
<b>Seat height</b>	468mm – 643mm
<b>Backrest height adjustment</b>	60mm
<b>Backrest tilting</b>	10° forwards 20° backwards
<b>Seat tilting</b>	5° forwards 4° backwards
<b>Seat depth / width</b>	420mm / 440mm
<b>Backrest height / width</b>	300mm / 420mm
<b>Seat and backrest material</b>	PU integrated foam



The backrest has an oscillating support and offers constant and adjustable backrest pressure.




620120

## CLASSIC INDUSTRIAL SWIVEL CHAIR

with flat base and sliders

**WS1210** Article no.: **620120**

**WS1210 ESD**  Article no.: **620130**

<b>Equipment</b>	Flat base with sliders
<b>Seat height</b>	455mm – 630mm
<b>Backrest height adjustment</b>	60mm
<b>Backrest tilting</b>	10° forwards 20° backwards
<b>Seat tilting</b>	5° forwards 4° backwards
<b>Seat depth / width</b>	420mm / 440mm
<b>Backrest height / width</b>	300mm / 420mm
<b>Seat and backrest material</b>	PU integrated foam



Gentle height adjustment with safety gas-pressure spring backrest, with steplessly adjustable height and tilt angle.




620140

## CLASSIC INDUSTRIAL SWIVEL CHAIR

with flat base and sliders

**WS1211** Article no.: **620140**

**WS1211 ESD**  Article no.: **620150**

<b>Equipment</b>	Flat base with sliders incl. foot ring
<b>Seat height</b>	640mm – 875mm
<b>Backrest height adjustment</b>	60mm
<b>Backrest tilting</b>	10° forwards 20° backwards
<b>Seat tilting</b>	5° forwards 4° backwards
<b>Seat depth / width</b>	420mm / 440mm
<b>Backrest height / width</b>	300mm / 420mm
<b>Seat and backrest material</b>	PU integrated foam



High version incl. foot ring as a climbing aid and footrest.




Foot ring Ø 440 mm

## ACCESSORIES | CLIMBING AID

for Classic industrial swivel chairs

Foot ring 05 K	Article no.:	620160
----------------	--------------	--------

Foot ring 05 K ESD 	Article no.:	620170
--	--------------	--------

Details	Diameter 440mm
Material	Chrome-plated steel



Conductive design per DIN EN 61340-5-1;  
suitable for use in ESD protected zones.

High-quality industrial swivel chairs  
motivate your personnel and enhance efficiency.  
In particular, numerous sickness absences are prevented.  
One third of all sick days result from back pain!






620010

### KLIMASTAR INDUSTRIAL SWIVEL CHAIR

with flat base and casters

**WS9220** Article no.: **620010**
**WS9220 ESD**  Article no.: **620020**

Equipment	Flat base with casters
Seat height	463mm – 638mm
Backrest height adjustment	yes
Backrest tilting	7° forwards 9° backwards
Seat tilting	5° forwards 3° backwards
Seat depth / width	430mm / 450mm
Backrest width	390mm
Seat and backrest material	Detachable PU foam, colour black (other colours on request)



Intuitive and easy  
to operate adjust-  
ment lever for  
backrest  
height adjustment,  
backrest locking



620030

### KLIMASTAR INDUSTRIAL SWIVEL CHAIR

with flat base and sliders

**WS9210** Article no.: **620030**
**WS9210 ESD**  Article no.: **620040**

Equipment	Flat base with sliders
Seat height	440mm – 625mm
Backrest height adjustment	yes
Backrest tilting	7° forwards 9° backwards
Seat tilting	5° forwards 3° backwards
Seat depth / width	430mm / 450mm
Backrest width	390mm
Seat and backrest material	Detachable PU foam, colour black (other colours on request)



Detachable upholstery  
Easy to clean  
Fully perforated  
seat and backrest surface  
improve the micro-climate



620050

### KLIMASTAR INDUSTRIAL SWIVEL CHAIR

with flat base and sliders

**WS1211** Article no.: **620050**
**WS1211 ESD**  Article no.: **620060**

Equipment	Flat base with sliders
Seat height	Incl. climbing aid, armrest is an accessory
Backrest height adjustment	630mm – 865mm
Backrest tilting	yes 7° forwards 9° backwards
Seat tilting	5° forwards 3° backwards
Seat depth / width	430mm / 450mm
Backrest width	390mm
Seat and backrest material	Detachable PU foam, colour black (other colours on request)



Tall backrest  
large seat surface with tilt  
adjustment  
fine-adjustable  
backrest compression  
for healthy  
and dynamic sitting



## ACCESSORIES | CLIMBING AID

for Klimastar industrial swivel chairs

Climbing aid 06.90 Article no.: 620070

Climbing aid 06.90 ESD  Article no.: 620080

**Details** Tilt adjustable by 23°,  
height adjustable  
by 60mm, non-slip  
footrest plate, folds up  
and follows the rotational  
movement of the chair

**Material** Chrome-plated steel



## ARMREST

Armrest 011 CH.90 Article no.: 620090

**Details** Integrated foam support

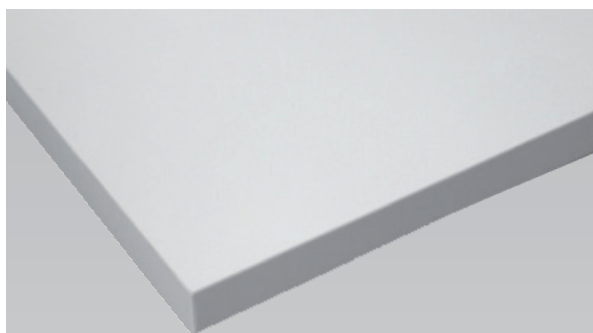
**Material** Tube: Chrome-plated steel



Conductive design per DIN EN 61340-5-1;  
suitable for use in ESD protected zones.

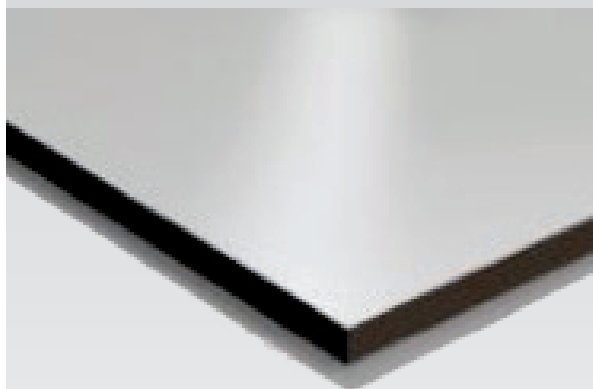
High-quality industrial swivel chairs  
motivate your personnel and enhance efficiency.  
In particular, numerous sickness absences are prevented.  
One third of all sick days result from back pain!






### COATED CHIPBOARD light grey

<b>Delivery options</b>	Sheet material and pre-cut
<b>Thickness</b>	8, 10, 19, 38 mm
<b>Edge finish</b>	Optionally without edges, panel lamination or 2mm ABS edge
<b>Colour</b>	Similar to RAL 7035 (light grey) Special colours possible



### COATED CHIPBOARD ESA light grey

<b>Delivery options</b>	 Sheet material and pre-cut
<b>Thickness</b>	19, 28.4, 38 mm
<b>Edge finish</b>	Optionally without edges, panel lamination or 2mm ABS edge
<b>Colour</b>	Similar to RAL 7035 (light grey)



### COATED COMPACT PANELS light grey

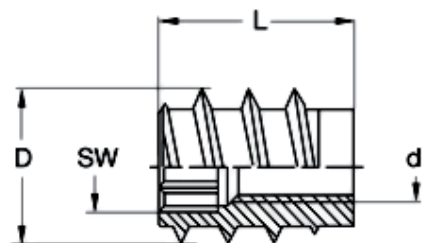
<b>Delivery options</b>	Sheet material and pre-cut
<b>Thickness</b>	4, 6, 8, 10, 13 mm
<b>Application options</b>	Racks, panelling, desktops
<b>Colour</b>	Similar to RAL 7035 (light grey) Special colours possible

### MULTIPLEX PANELS

<b>Delivery options</b>	Sheet material and pre-cut
<b>Thickness</b>	40 mm

All panels can also be ordered from ASK with individual processing (shape, holes, CNC milling, etc.).

## CONNECTION SLEEVE FOR DESKTOPS



**Sleeve M6**  
**Dimensions**



**Article no.:** 370400  
D = 12mm, d = M6,  
L = 12mm, sw = 6mm  
10mm

**Core hole**

**Sleeve M8**  
**Dimensions**

**Article no.:** 370405  
D = 14mm, d = M8,  
L = 18mm, sw = 8mm  
12mm

**Core hole**

**Material**

Bare steel



Conductive design per DIN EN 61340-5-1;  
suitable for use in ESD protected zones.



### ASSEMBLY TABLE electrically height adjustable

<b>Equipment</b>	System luminaires (2 units)
	Power strip
	Rear panel
	Casters



### ASSEMBLY TABLE electrically height adjustable

<b>Equipment</b>	System luminaires
	Power strip
	Material level swivelling
	Footrest
	Desktop in special colour
	Bottle holder
	Drawer cabinet, wheeled
	Sliding strip for tool suspension



### ASSEMBLY TABLE electrically height adjustable

<b>Equipment</b>	Several system luminaires
	Material level swivelling
	Various grab containers

## ASSEMBLY TABLE electrically height adjustable

Equipment	System luminaires (2 units)
	Air stream rail
	Information board
	Swivelling arm for monitor
	Material level swivelling with grab containers,
	Bottle holder
	Sliding strip with balancer for tool suspension
Assembly device with tilt adjustment	



## ASSEMBLY TABLE electrically height adjustable

Equipment	System luminaire
	Information board
	Swivelling arm for monitor
	Material level swivelling
	Several grab containers
	Air stream rail



## ASSEMBLY TABLE electrically height adjustable

Equipment	System luminaire
	Energy strip
	Material level swivelling
	Swivelling boom for tool suspension
	Bottle holder
	Side table height adjustable



## ASSEMBLY STATION WITH LINK

### Equipment

System luminaires  
Power strip  
Material level swivelling  
Industrial swivel chair  
Link with workpiece  
carrier system TS1  
Pneumatic box lifter

## REWORK TABLE

### Equipment

System luminaires (2 units)  
Power strip  
Working level rotates through 360°  
Locking via disc brake (foot switch)  
Various grab containers  
Bracket for hot air gun

## MOBILE REWORK TABLE

### Equipment

System luminaire (2 units)  
Power strip  
Tilted desktop  
Material level swivelling  
Tool cabinet  
Additional levels pull out  
Casters  
Waste bin  
Bracket for hot air gun

### SIDE TABLE electrically height adjustable

#### Equipment

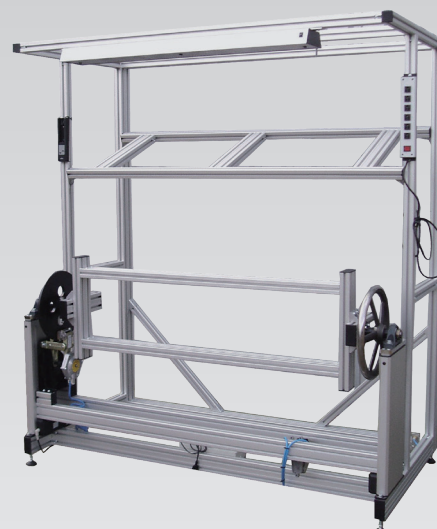
Electrical lifting column  
Casters,  
Desktop  
Store



### WORKING TABLE HV with swivelling frame

#### Equipment

System luminaires  
Working level rotatable  
Lifting column  
Power strip

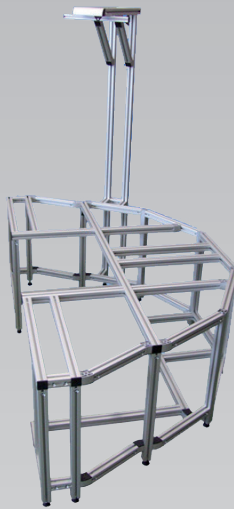


### ASSEMBLY STATION electrically height adjustable

#### Equipment

LED system luminaire  
Roller bars for material handling  
Lifting column  
Drawer cabinet  
Desktop





### ASSEMBLY STATION U-shaped

#### Equipment

System luminaire  
Angle connector  
Adjustable feet



### ASSEMBLY STATION with closed profiles

#### Equipment

System luminaire  
Power strip  
Sliding strip for tool suspension  
Desktop



### ASSEMBLY STATION with conveyor track

#### Equipment

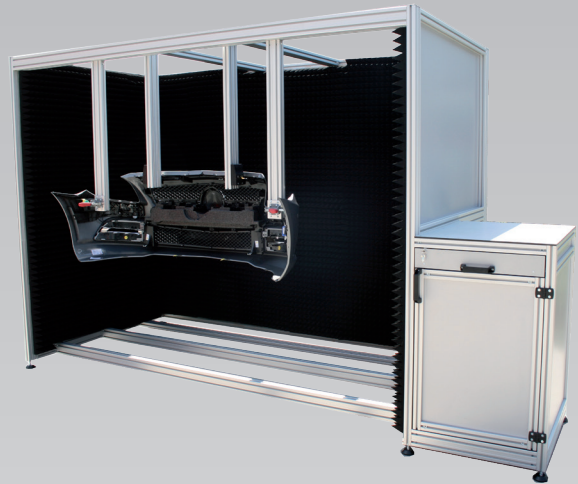
System luminaire  
Power strip  
Sliding strip for tool suspension  
Conveyor track  
Lifting columns  
Material level swivelling  
Swivelling arm for monitor  
Desktop



## INSTALLATION SITE for automotive parts

### Equipment

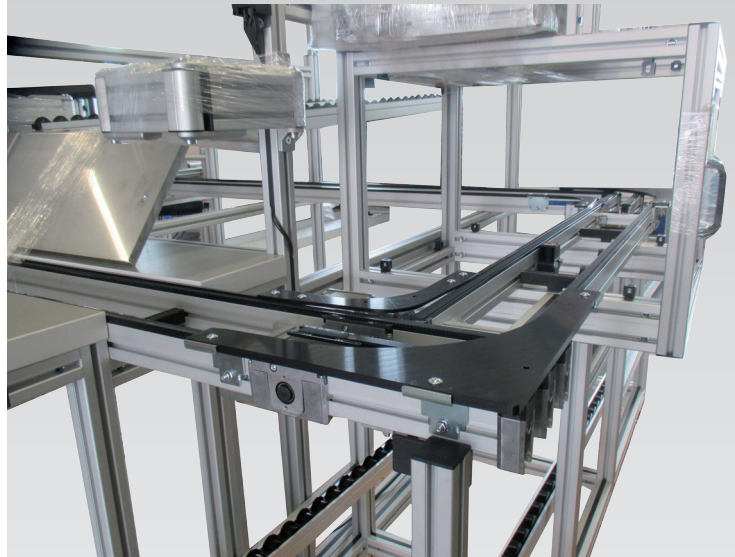
Compact panels  
Tool cabinet  
Acoustic insulation



## TRANSFER SYSTEM

### Equipment

Workpiece slide, stainless steel  
BOSCH transfer system  
Swivelling arm  
Roller bars for material handling

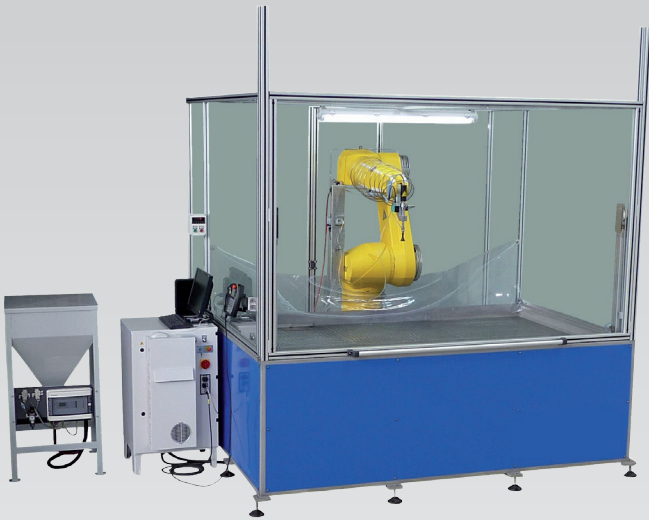




## PROTECTIVE ENCLOSURE

### Equipment

Foundation bracket  
Handles  
Polycarbonate glass  
Hinges for flaps and doors



## PROTECTIVE ENCLOSURE

### Equipment

Supports  
Polycarbonate glass  
Sheet metal for covering the bottom



## PROTECTIVE ENCLOSURE

### Equipment

Foundation bracket  
Handles  
Polycarbonate glass  
Hinges for flaps and doors

### ASSEMBLY LINE

#### Equipment

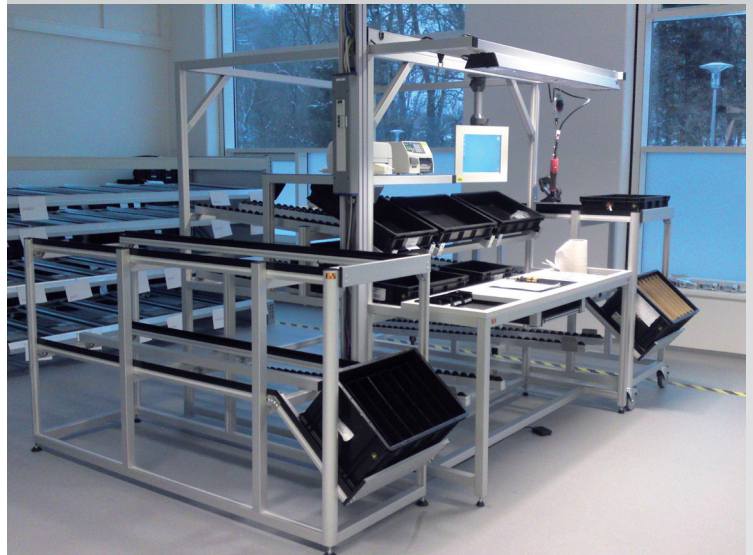
System luminaires  
Roller track for material handling  
Monitor bracket  
Screwdriver suspension



### ASSEMBLY LINE

#### Equipment

System luminaires  
Roller track for material handling  
Monitor bracket  
Screwdriver suspension  
Material level



### PRODUCTION SYSTEM

#### Equipment

Desk electrically height adjustable  
System luminaires with drawbar  
Power strip  
Material level

