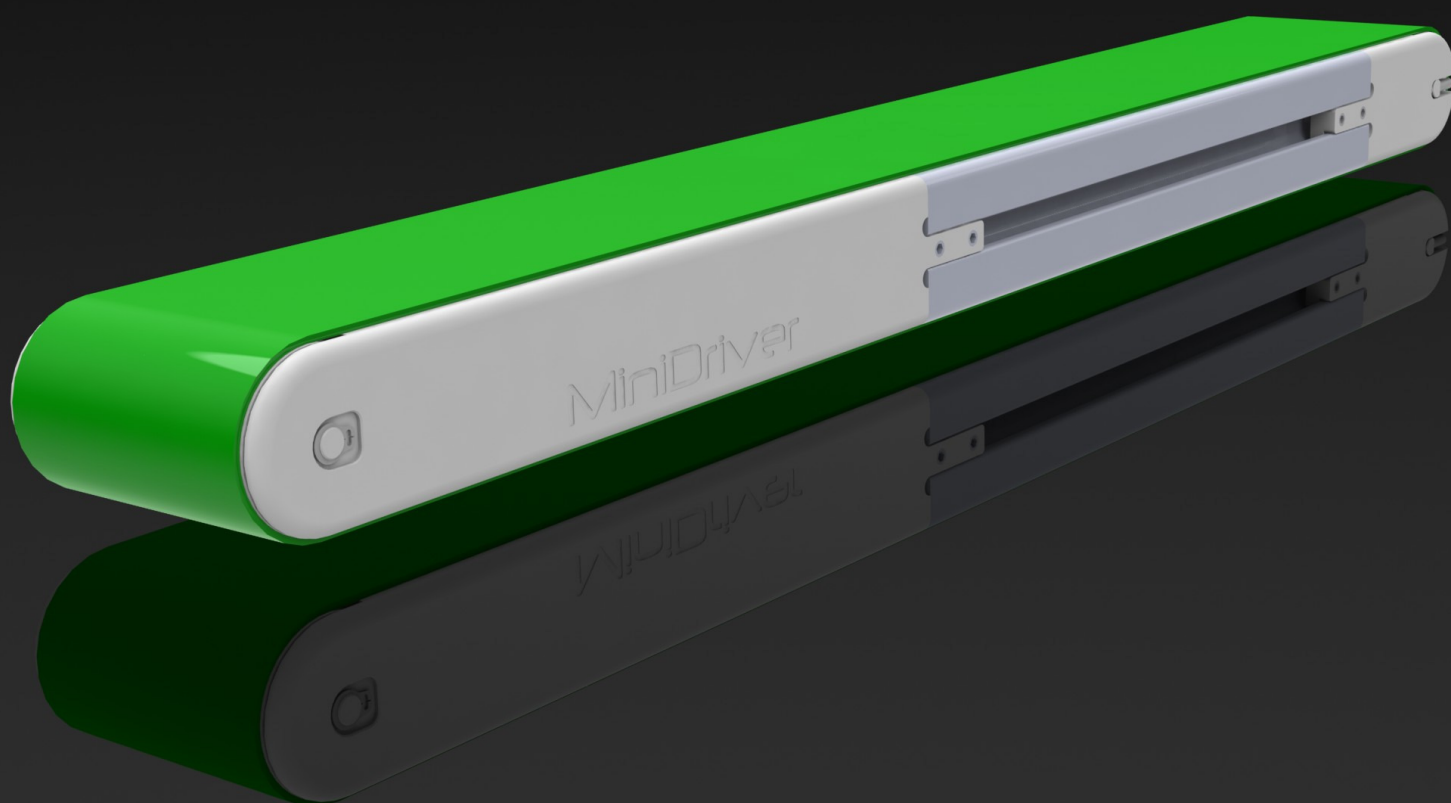


MiniDriver

easy
...SYSTEMS



Compact
Modular
Internal drive system

easy
...SYSTEMS

Easy Systems

Noordervaart 33 | 2200 Herentals | Belgium
T: +32 (0)14/72.93.84 | F: +32 (0)14/72.93.85
info@easy-systems.be | www.easy-systems.be

Due to the special designed enclosure dust and even splash water will not affect the good working.

A wide range of belt materials, even for food industry.

“Motorless” concept.
Inside drive system.



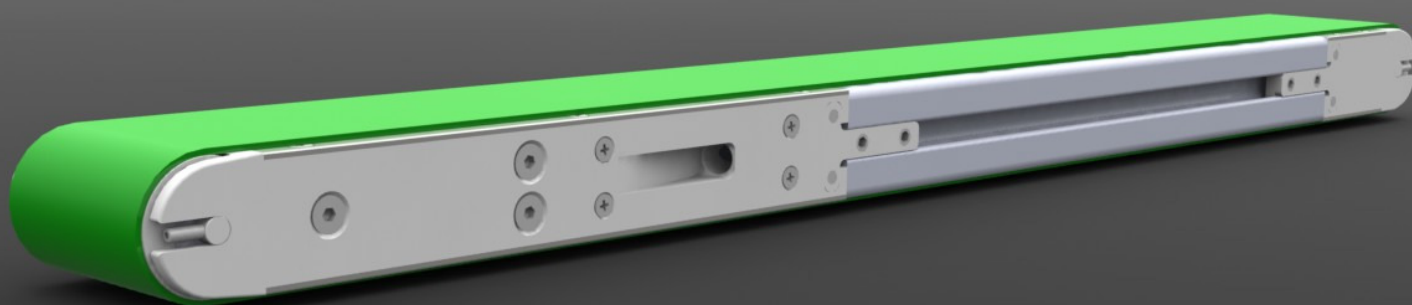
- Easy to mount via the standard alu profile.
- Multi-track: Two or more conveyors attached to each other, individual driven, same or different lengths.

Efficient for lots of applications:

- Food packing
- Cosmetics
- Pharma
- Electronics
- ...

Good looking design

MD-20-040



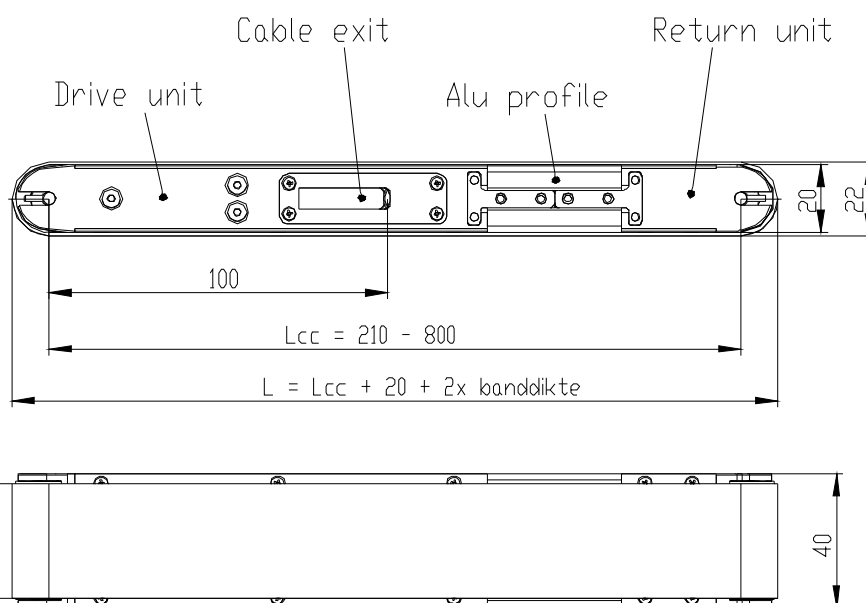
Speed:

From 0,5 m/min up to 10 m/min

Load (in function of speed):

20N at 0,5 m/min

2N at 10 m/min



The above mentioned values are the max en min for this type. Many different speeds can be set due to a wide range of motor-reducers available and with a speedcontroller (see Drive Electronics). Ask your dealer for the possibilities.

MD-20-060



Speed:

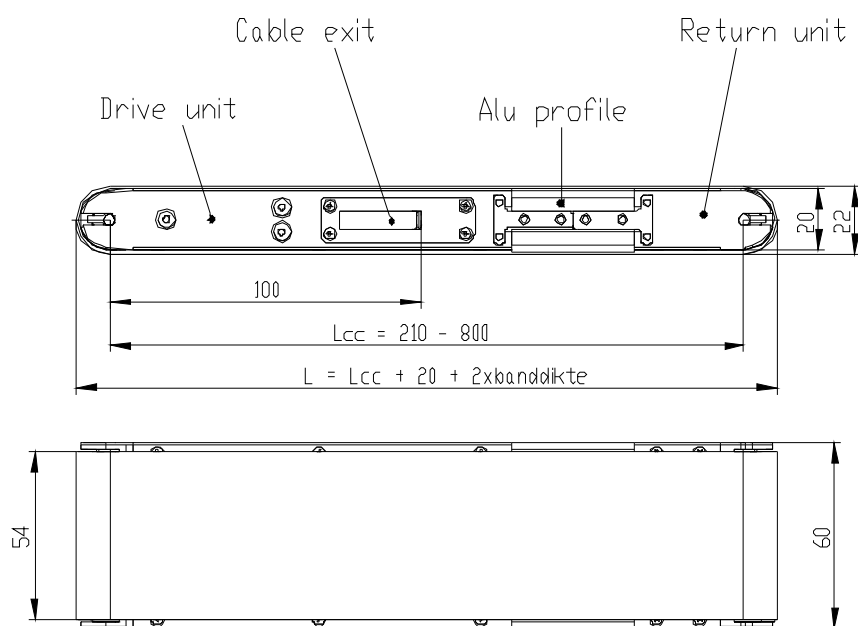
From 0,5 m/min up to 10 m/min

Load (in function of speed):

20N at 0,5 m/min

2N at 10 m/min

The above mentioned values are the max en min for this type. Many different speeds can be set due to a wide range of motor-reducers available and with a speedcontroller (see Drive Electronics). Ask your dealer for the possibilities.



Series 20

MD-30-060-LC

Low speed / Low load / Intermittent operation:

Starting at 0,5m/min with a max. load of 75N

Up to 10m/min with a max. load of 5N

Low speed / Heavy load / Intermittent and Continuous operation:

Starting at 0,5m/min with a max. load of 120N

Up to 10m/min with a max. load of 15N

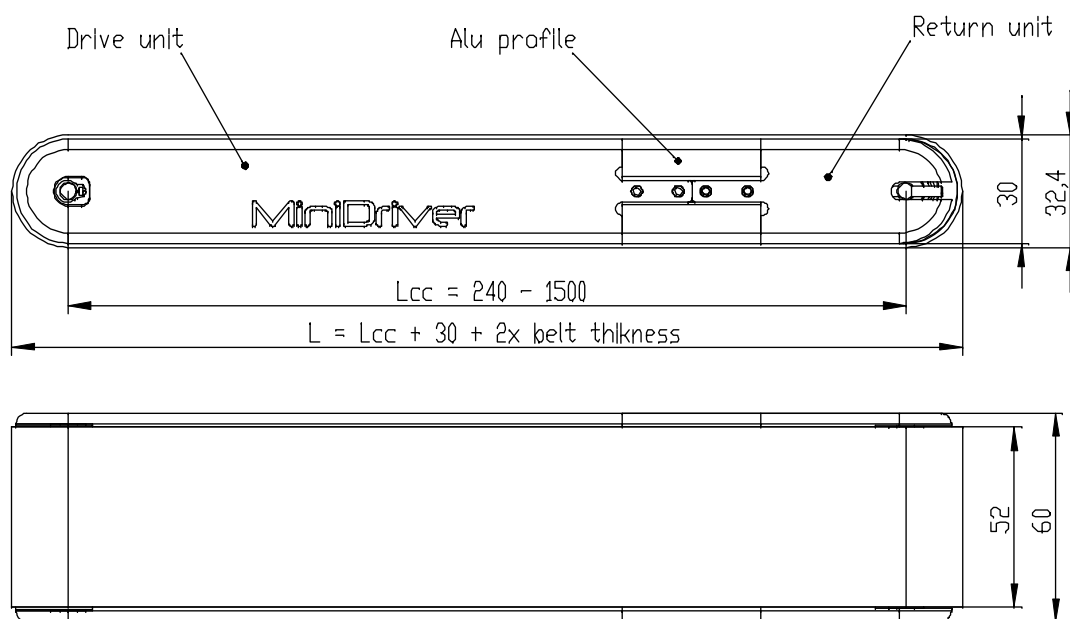
High speed / Low load / Continuous operation:

Starting at 15m/min with a max. load of 15N

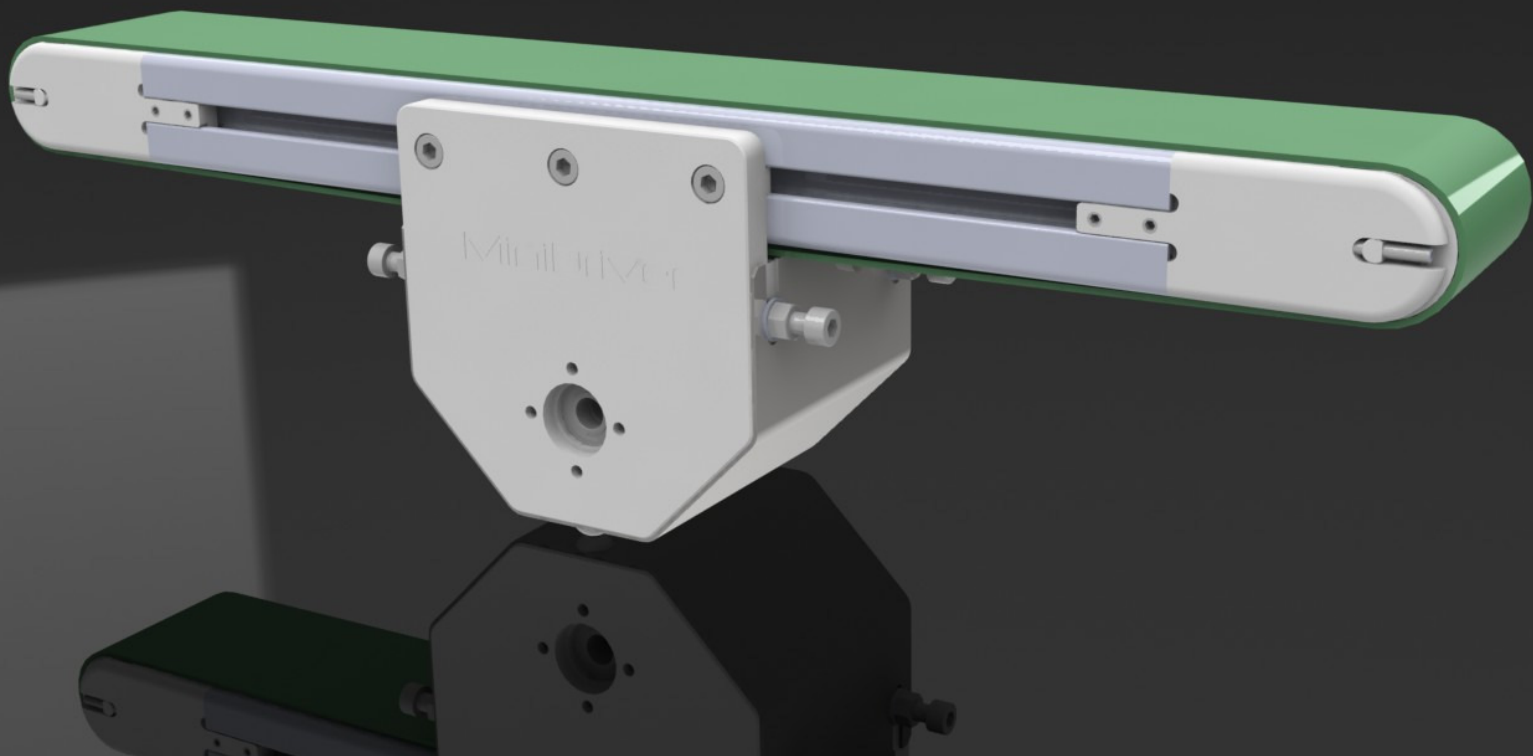
Up to 35m/min with a max. load of 5N



The above mentioned values are the max en min for this type. Many different speeds can be set due to a wide range of motor-reducers available and with a speedcontroller (see Drive Electronics). Ask your dealer for the possibilities.



MD-30-060-CD



Ideal for use in 2 directions.

Easy fit system* for the following gearheads:



Series 30/1 and Series 30/1S



GP32A, GP32C, GP32HP and KD32

*Easy Fit System: Gearheads can build to the conveyor drive unit without any customization of it. Disassembling the drive unit is necessary to attach the gearhead and connect it to the drive pulley.

Series 30

MD-30-120-LC

Low load / Intermittent operation:

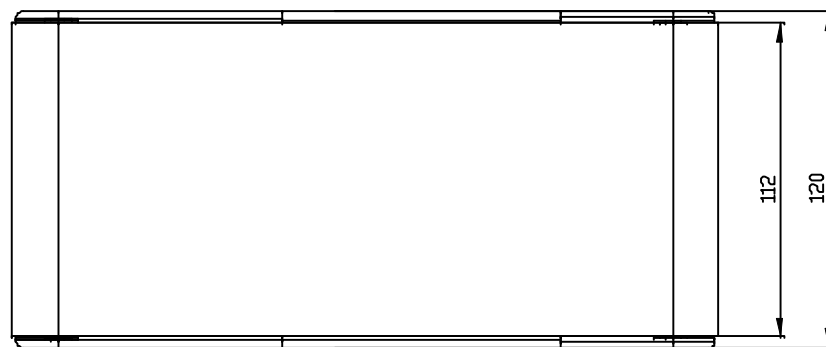
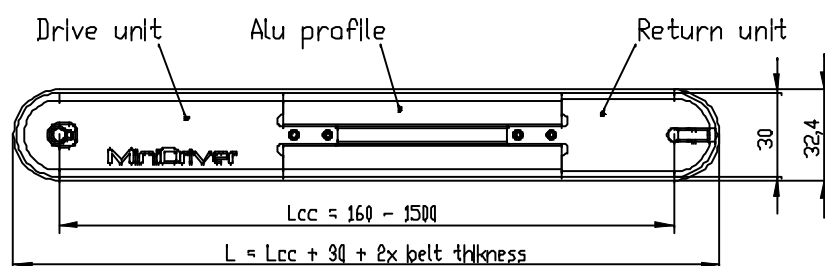
Starting at 0,5m/min with a max. load of 75N

Up to 10m/min with a max. load of 5N

Heavy load / Intermittent and Continuous operation:

Starting at 0,5m/min with a max. load of 120N

Up to 10m/min with a max. load of 15N



The above mentioned values are the max en min for this type. Many different speeds can be set due to a wide range of motor-reducers available and with a speedcontroller (see Drive Electronics). Ask your dealer for the possibilities.

MD-30-300

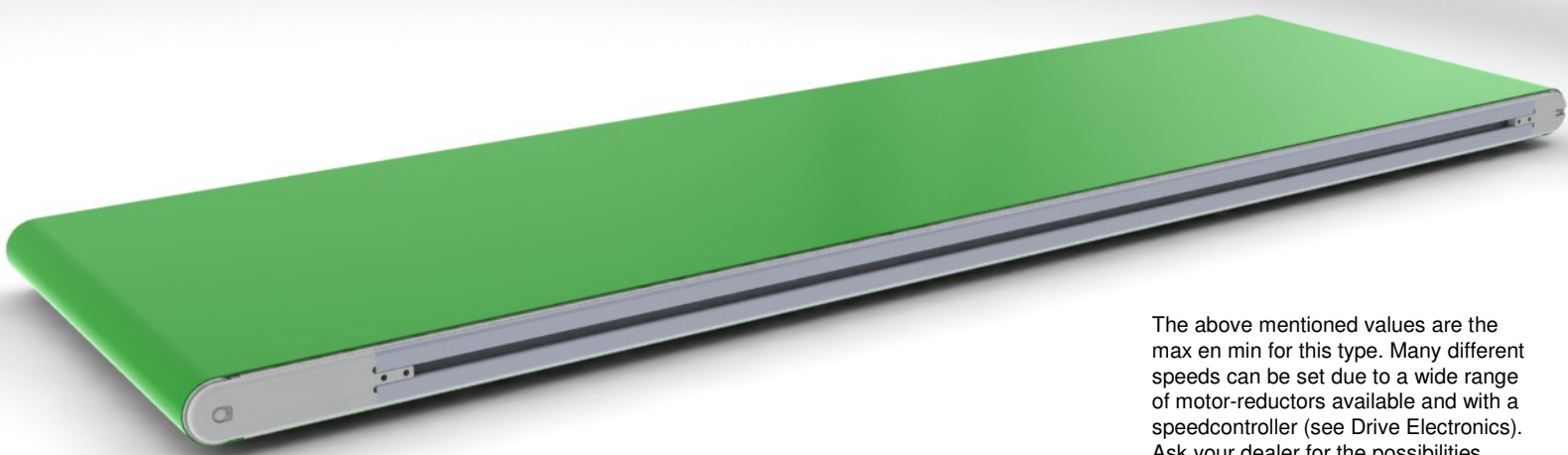
Speed:

From 0,5 m/min up to 10 m/min

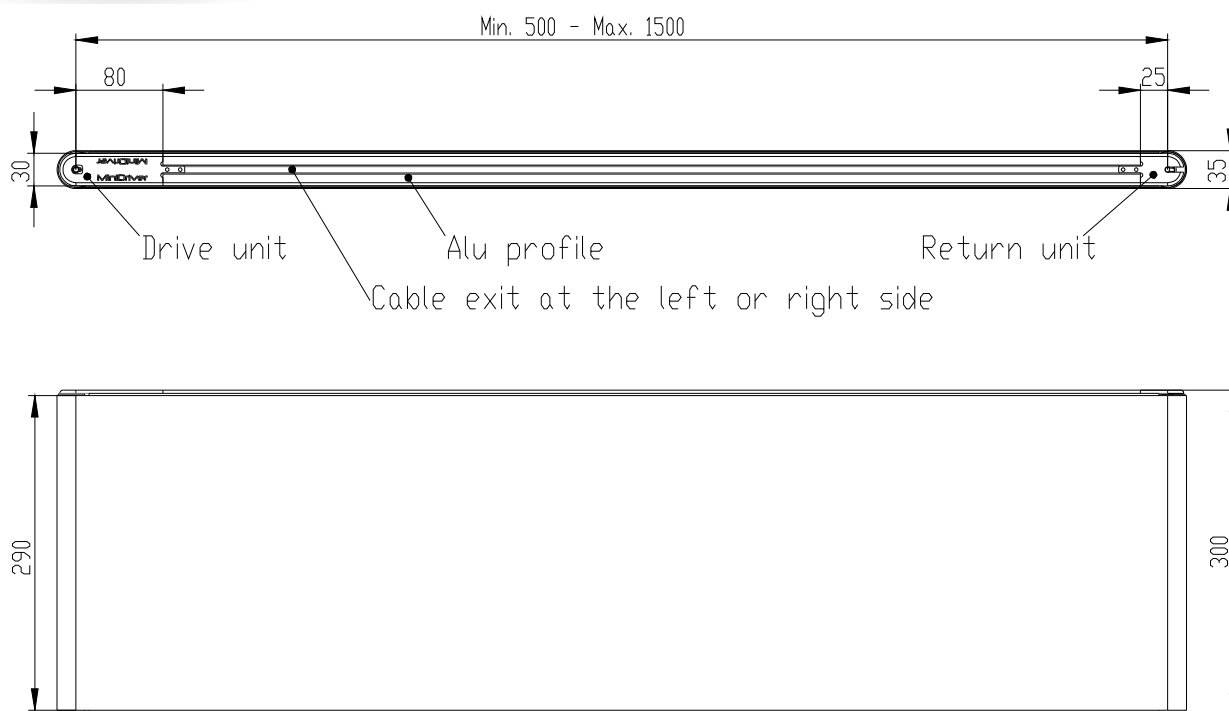
Load (in function of speed):

100N at 0,5 m/min

12N at 10 m/min



The above mentioned values are the max en min for this type. Many different speeds can be set due to a wide range of motor-reducers available and with a speedcontroller (see Drive Electronics). Ask your dealer for the possibilities.



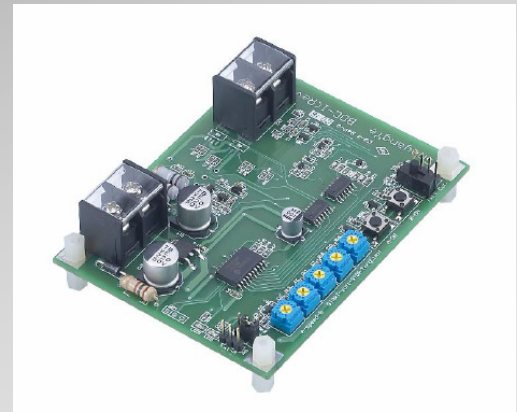
MD-SR-I

Features:

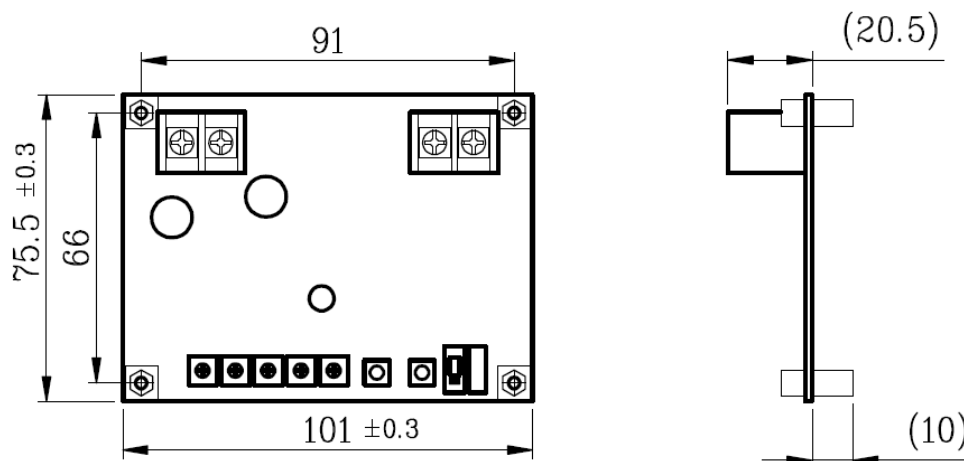
- Connecting with DC-motors without encoder
- Can regulate 2 different speeds
- Can regulate the motor start and brake time slowly
- Overload protection limits the MAX. Torque (current) for circuit and mechanism protection purpose
- Built-in dual overload protection
- 2 LED to show motion drive

Specifications:

- Supply voltage: DC 9V – 24V
- Motor drive current: continuous max. 5A
- Control mode: Voltage control PWM frequency 16kHz duty: 0 - 100%
- Speed, current limit and direction can be regulated with built in potentiometers or via instruction set
- Soft start and brake: 0 – 2 sec.



Prefer use: - all series with intermitted operation*
- all series with heavy load operation at low speed*



*This speed regulator can only be used with standard DC-motors without encoder. For Brushless DC-motors we refer to the MD-SR-2

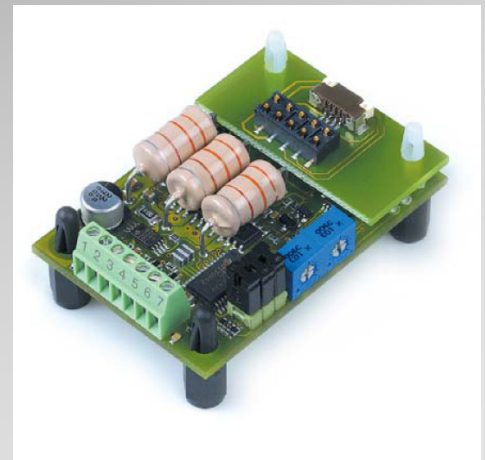
MD-SR-2

Features and specifications:

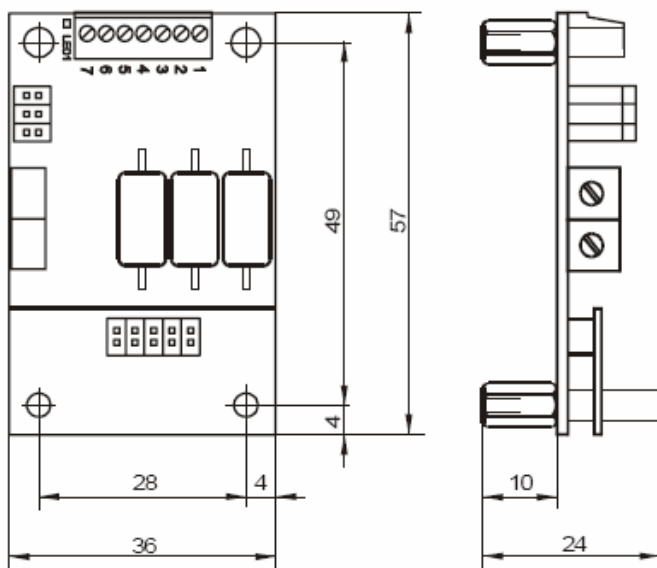
- Digital speed control
- Set value input trough built-in potentiometer or analogue set value input (0 ... 5V)
- Adjustable max. current limit
- Speed monitor output
- Supply voltage: DC 5V – 24V
- Motor drive current: continuous max. 1A
- Soft start and brake

Advantages:

- For use with Brushless DC-motors only.
- Included in scope of delivery.
- Built-in in the transport system.



Prefer use: - all series with continuous operation*
- all series with low load operation at high speed*



*This speed regulator can not be used with standard DC-motors without encoder.
For the standard motors we refer to the MD-SR-1.
Not sold seperately, only in combination with a Brushless DC-motor.